

EnergyAustralia Yallourn Pty Ltd Declared Mine Rehabilitation Plan

Community and Stakeholder Engagement Summary Report (September 2025)



EnergyAustralia
LIGHT THE WAY

PROJECT	Yallourn Declared Mine Rehabilitation Plan	DATE	25 September 2025
GROUP	Community Engagement	STATUS	Final
AUTHOR/S	N. King (EAY) & N. Sutherland (ERM)	REVISION	[Revision]
COMPANY	EnergyAustralia Yallourn Pty Ltd ABN 47 065 325 224	FILE NUMBER	NA
FILE NAME	Yallourn DMRP Community and Stakeholder Engagement Summary Report		

Table of Contents

Glossary	3
Executive Summary	4
Summary of key findings	4
Introduction	5
Legislative requirements	5
Purpose of the EAY DMRP Engagement Summary Report.....	5
DMRP engagement scope	6
Engagement Approach	7
Objectives of the DMRP Community and Stakeholder Engagement	7
Methods and tools used for engagement	7
Summary of Engagement Activities	8
Stakeholder and Community Feedback	10
Key themes	10
Sentiment	12
Community ideas for future use of a lake	12
Consideration of feedback in the DMRP	13
Ongoing and Future Engagement	15
Appendices	16
Appendix A: Community and Stakeholder Engagement Summaries	16
Appendix B: Advertising and Project Collateral.....	21
Appendix C: Yallourn DMRP What We Heard Report	57
Appendix D: Consultation Report: Mine Rehabilitation – The Future Together	59
Appendix E: Next steps and contact information for further inquiries.....	62

List of Figures

Figure 1: Local Government Areas (LGA's). Source: www.audit.vic.gov.au/report/local-government-and-economic-development	6
Figure 2: Engagement sites. Source: www.vic.gov.au/know-your-council	6
Figure 3: Frequency of topics raised	10
Figure 4: Community sentiment by in-person event.....	17
Figure 5: Frequency of topics raised at the in-person engagement events.....	17
Figure 6: Public notice to announce the DMRP 60-day exhibition period. First published on 18 June 2025.	21
Figure 7: Advertisement for community information stands	22
Figure 8: Social media post to advertise the MLRA event - EnergyAustralia Facebook.....	23
Figure 9: Social media post from 24 June 2025 - EnergyAustralia Facebook.....	24
Figure 10: Figure 2: Social media post - EnergyAustralia Facebook.....	25
Figure 11: Figure 2: Example social media post to advertise engagement events - EA Facebook.....	26
Figure 12: Letter to adjacent landowners to announce the DMRP and 60-day exhibition period	31
Figure 13: Sample screenshots of the www.yallourntransition.com.au webpages.....	32
Figure 14: 14-question online survey	38
Figure 15: Sample pages from the 485-page EnergyAustralia Yallourn DMRP and a photo of the publicly available bound copies.....	39

Figure 16: Sample pages from the 37-page DMRP Summary Document 40

Figure 17: DMRP Fact sheet 47

Figure 18: MLRA Technical fact sheets made available at events..... 48

Figure 19: 10 x A1 corflute boards on display at events and at the EAY Community Hub in Morwell 54

Figure 20: Giveaways: EA-branded water bottles, travel mugs, jellybeans and tote bags to carry the printed materials and giveaways 56

List of Tables

Table 1: DMRP Stakeholder and Community Engagement Activities 8

Table 2: Summary of community interests and views 13

Table 3: List of in-person or online events held during the 60-day exhibition period 16

Table 4: Breakdown of interactions, sentiment, and number of people who commented, by event..... 16

Table 5: Survey respondents by age..... 20

Table 6: Survey respondents by community group..... 20

Glossary

Key Terms and Abbreviations

Term/ Acronym	Definition
CMS	Consultation Management System
Community	A group of people who are living / working / commuting / frequenting an area or region who are affected by activities undertaken in that area or region.
CSEP	Community and Stakeholder Engagement Plan
CSESR	Community and Stakeholder Engagement Summary Report (this report)
DMRP	Declared Mine Rehabilitation Plan
EA	EnergyAustralia
EAY	EnergyAustralia Yallourn
EES	Environmental Effects Statement
ERR	Earth Resources Regulator
LGA	Local Government Area
MLRA	Mine Land Rehabilitation Authority
MRD	Morwell River Diversion
MRSDA	<i>Mineral Resources (Sustainable Development) Act 1990 (Vic)</i>
MRSDMIR	<i>Mineral Resources (Sustainable Development) (Mineral Industries) Regulations 2019 (Vic)</i>
Project	The rehabilitation of the Yallourn mine
Site	Yallourn mine
Stakeholder	Individuals or groups that are likely to affect, or be affected, by a proposed project

Executive Summary

The *Mineral Resources (Sustainable Development) Act 1990* (Vic) (MRSDA) requires declared mine licensees to submit a Declared Mine Rehabilitation Plan (DMRP) to the Victorian government documenting their plan to rehabilitate the relevant mine.

As a declared mine licensee, Energy Australia Yallourn (EAY) was required to consult with the community during mine closure and rehabilitation under the MRSDA. This requirement included a 60-day public exhibition period, evidence of consultations, and copies of any submissions received.

EAY held a public consultation and exhibition period between 18 June and 18 August 2025. Throughout this period, EAY followed Resources Victoria's 'Principles for Community Engagement' for all activities.

EAY's engagement program focused on leveraging existing community events to minimise the risk of exacerbating engagement fatigue, which is known to exist in the region. During the consultation and exhibition period, six in-person engagement opportunities were conducted at local markets and venues, selected to capture a diverse cross-section of local communities. Additionally, two online webinar information sessions were hosted, and the EnergyAustralia Morwell Community Hub was open to the public, either by dropping in on Tuesdays and Wednesdays or by attending by appointment.

An extensive array of collateral was developed to help explain the DMRP, assist in building the communities' understanding, and provide mechanisms for sharing feedback.

Summary of key findings

- Overall, the community expressed support for the plan to rehabilitate the Yallourn mine into a lake for future recreational use. The majority were accepting of the mine closure and the subsequent transition to cleaner energy from renewable sources.
- Excitement about the future use of the lake and surrounding areas was evident, with several ideas for commercial ventures and tourism captured for review by the Victorian government.
- From the concerns raised, the primary focus was on the volume of water required to fill the lake and how long it would take. There was additional interest in how the introduction of a lake might impact the local environment. A desire for a deeper understanding of the Morwell River Diversion (MRD) was also regularly referenced, as well as how to ensure stabilisation of the land. These inputs were reviewed and considered in the development of the final DMRP.
- The topic of energy security was frequently raised. Comments ranged from support for renewable energy sources in Victoria to concerns that there would not be enough energy to power the state, with a desire to understand the issue better. A small number of respondents opposed renewable energy sources, preferring new, cleaner coal-fired power stations and nuclear power. While related, this debate remains separate from the DMRP.
- The community was also interested in how the closure of the power station and mine would impact job security, any potential flow-on effects into the local economy, and benefits that could be realised for the community.
- There was a high level of interest in ongoing community engagement. Comments pertained to being kept informed, being given more opportunities to learn about the impacts, and having their say as the process moves forward.

Introduction

EAY's plan for a pit lake at Yallourn has been under consideration for a long time. Since it was first proposed as the rehabilitation solution in the early to mid-1990s by the State Electricity Commission of Victoria (SECV), subsequent modelling and investigations by industry experts and EAY have supported this solution.

To meet regulatory obligations, EAY developed a 485-page DMRP with appendices, a DMRP Community and Stakeholder Engagement Plan, a 37-page DMRP Summary Document, and a 4-page factsheet. The DMRP documents the plan to make the mine site safe, stable, and sustainable by filling the mine voids with water. This will create a lake that locals and visitors can enjoy, while also serving as a home for wildlife. The final DMRP and appendices will be submitted to the Victorian government for assessment on 30 September 2025.

Legislative requirements

As a declared mine licensee, EAY has a duty to consult with the community during mine closure and rehabilitation under the [MRSDA](#) and the [Mineral Resources \(Sustainable Development\) \(Mineral Industries\) Regulations 2019](#) (MRSDMIR). This duty to consult includes specific requirements for the DMRP, including a 60-day public exhibition period, evidence of consultations, and copies of any submissions received.

The [Yallourn Community and Stakeholder Engagement Plan \(CSEP\)](#) was developed to support EAY in meeting these requirements. It provides a strategic framework with guidelines for community and stakeholder engagement related to the DMRP. An EAY Community and Stakeholder Engagement Action Plan (Action Plan) outlines the details of the engagement activities to be undertaken. The deliverables in the Action Plan adhere to the principles outlined in the CSEP.

The CSEP and Action Plan formalise and document community and stakeholder engagement activities for the DMRP. This enables EAY to meet the regulatory obligations outlined in the MRSDA and MRSDMIR, administered by Victoria's Earth Resources Regulator (ERR), including the specific requirements for the 60-day public consultation and exhibition period.

Purpose of the EAY DMRP Engagement Summary Report

This EAY DMRP Community and Stakeholder Engagement Summary Report (CSES) has been developed to document the DMRP engagement activities undertaken in Gippsland communities during the 60-day public consultation and exhibition period in June, July, and August 2025. The CSES analyses community commentary, identifies key themes and issues, and documents how the feedback has been responded to in the DMRP prior to formal submission.

DMRP engagement scope

The Action Plan identified the Local Government Areas (LGAs) of Baw Baw Shire Council, Latrobe City Council, and Wellington Shire Council as ideal locations for community engagement due to their proximity to the Yallourn mine site.

Within these areas, community engagement took place at existing public events and locations in the townships of Sale, Traralgon, Stratford, Trafalgar and Yallourn North, due to their diversity in terms of population and socio-economic factors. These areas also represent a cross-section of Gippsland's urban and rural communities, each with unique perspectives, challenges, and opportunities. Staging public engagement opportunities in these townships ensured key messages were broadcast across a broad geography and local voices were heard.

With several large-scale projects currently seeking to engage with the same community members and stakeholders in the region, it was important to tap into existing community events. This was designed to help mitigate potential consultation fatigue, which could impact on the community's appetite for participating in EAY engagement activities.

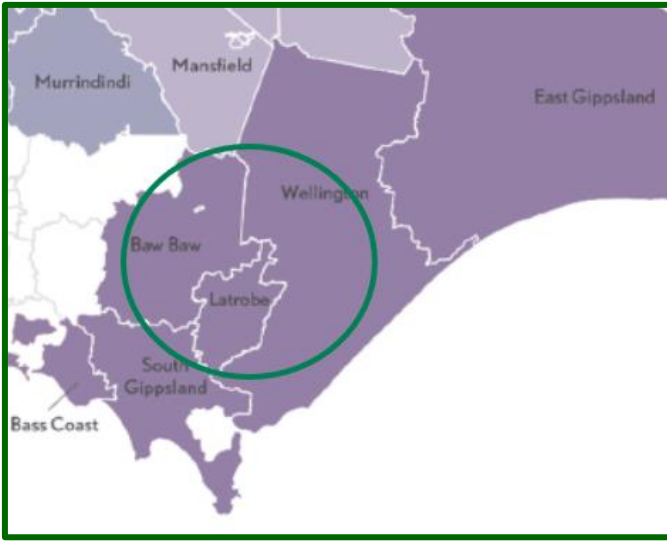


Figure 1: Local Government Areas (LGA's). Source: www.audit.vic.gov.au/report/local-government-and-economic-development

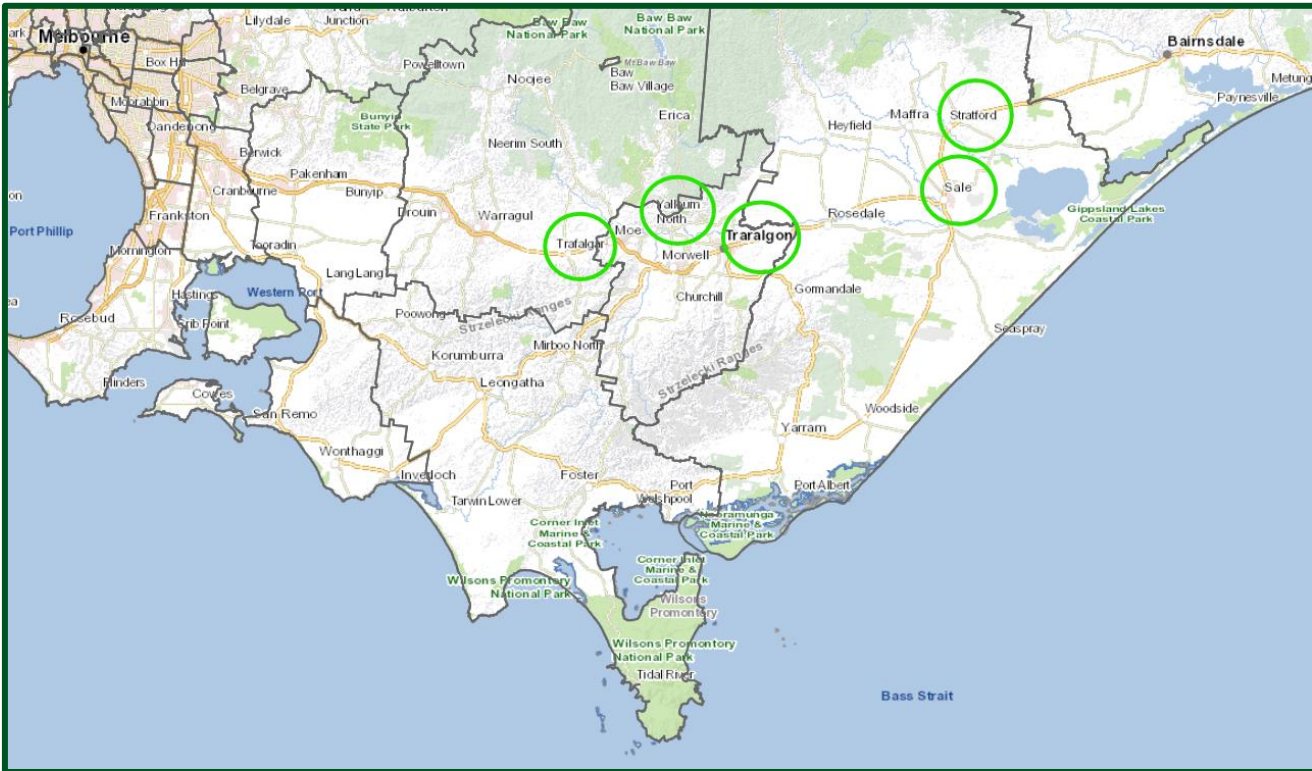


Figure 2: Engagement sites. Source: www.vic.gov.au/know-your-council

To ensure the engagement was inclusive and responsive, two webinars provided the same information to online audiences. This enabled greater reach to interested stakeholders unable to attend the in-person community engagement events for several reasons, including mobility, health, or scheduling issues. The two sessions were held at various times to accommodate as many different audiences and schedules as possible.

Engagement Approach

Objectives of the DMRP Community and Stakeholder Engagement

Undertaking community and stakeholder engagement activities, as described in the CSEP, built on the solid foundation of engagement EAY has established during its operation of the Yallourn mine, which included discussions regarding rehabilitation. The CSEP is founded on the principle that the timely provision of information, complete transparency, building strong relationships with stakeholders, and regular engagement with communities are critical to achieving stakeholder and community support for the Yallourn mine rehabilitation.

Key objectives during the 60-day consultation and exhibition period included the following:

- Encourage participation and attendance at engagement events and promote awareness of statutory engagement opportunities through a comprehensive marketing campaign.
- Inform communities about the Project and the opportunity to provide timely feedback during the statutory engagement process, via a submission, through face-to-face engagement activities or webinars.
- Communicate key messages to help people understand the Project and the DMRP by ensuring communication materials are clear and accessible.
- Manage expectations with honesty and transparency.

Methods and tools used for engagement

A range of communication and engagement methods and tools have been used to support different stages of the Project. Engagement techniques were tailored based on audience preferences, requirements, and objectives. Activities were categorised into three sequential groups:

- **Planning:** activities to prepare for communication and engagement to commence.
- **Collateral:** preparing communication materials to support communication and engagement activities.
- **Engagement:** delivery of the engagement activities with communities and stakeholders.

On the next page, **Table 1: DMRP Stakeholder and Community Engagement Activities** describes the suite of engagement tools and channels used for the DMRP engagement.

Summary of Engagement Activities

Engagement with stakeholders and the community was undertaken in line with the CSEP's objectives to share information transparently and capture a range of views to inform the development of the DMRP.

Table 1: DMRP Stakeholder and Community Engagement Activities summarises the engagement activities undertaken to support stakeholder and community members' understanding of the DMRP and provide channels for feedback. Full details and visuals for the in-person engagement activities, summaries of feedback as well as the advertisements and collateral, are provided in **Appendix A: Community and Stakeholder Engagement** and **Appendix C: Advertising and Project Collateral**.

Table 1: DMRP Stakeholder and Community Engagement Activities

Activity	Description
Utilise established and existing communications channels and tools	<ul style="list-style-type: none"> Utilised the dedicated Project website www.yallourntransition.com.au Utilised an email address and responded to Project enquiries: community.yallourn@energyaustralia.com.au Utilised a dedicated telephone line, 1800 574 947, for enquiries and feedback Utilised the EnergyAustralia Community Hub at 228 Commercial Road in Morwell in August 2024. The hub is open for drop-ins on Tuesdays and Wednesdays from 10 am to 3 pm, or by appointment Utilised Consultation Manager as a stakeholder database and management system to record engagements, feedback, and Project sentiment over time
Advertising	<ul style="list-style-type: none"> Published a Public Notice in the Latrobe Valley Express newspaper to announce the 60-day exhibition period and how to provide feedback Published a four-week advertisement campaign in three local newspapers. The advertisement provided details for the in-person information sessions, a QR code for the survey, and details for alternate channels for feedback Created social media posts to advertise the DMRP and how the community can "Have Your Say"
Collateral to support information sharing	<p>EAY developed the following collateral used at the market engagement stands and the Community Hub in Morwell (plus regional libraries if noted):</p> <ul style="list-style-type: none"> A Project Factsheet was made available at www.yallourntransition.com.au and distributed via letterbox drop to ~200 properties surrounding the radius of the Yallourn site Printed and bound copies of the full DMRP were made available at nine libraries and community centres across the Gippsland region and the EA Community Hub in Morwell A 37-page DMRP Summary Document providing an overview of the DMRP A four-page booklet-sized factsheet handed out at all the in-person events and the EAY Community Hub in Morwell 10 x A1 display boards with key messages, maps and the Project timeline A postcard-sized handout with the QR code to the survey EnergyAustralia-branded gifts to hand out to community members (drink bottles, coffee mugs, jellybeans and tote bags)
Letters/emails to stakeholders	<ul style="list-style-type: none"> Letters or emails to announce the DMRP 60-day exhibition period sent to: <ul style="list-style-type: none"> Adjacent landowners Prescribed Stakeholders Non-Prescribed Stakeholders
Stakeholder Briefings - held during the 60-day exhibition period	<ul style="list-style-type: none"> EAY held stakeholder briefings by request during the 60-day exhibition period. This included hosting a Yallourn Environmental Review Committee (ERC) meeting in August,

Activity	Description
	attended by representatives from the general public, the ERR, EPA, and the Gunaikurnai Land and Waters Aboriginal Corporation (GLaWAC).
Online survey	<ul style="list-style-type: none"> • A 14-question online survey was live during the 60-day exhibition period, seeking to understand the community's knowledge of and sentiment towards the DMRP and providing an opportunity for feedback. 38 participants completed the survey. The following sentiments were recorded: <ul style="list-style-type: none"> ○ 31 positive ○ 5 neutral ○ 2 negatives
Community engagement sessions (online and in-person) <i>A detailed breakdown of the in-person events is provided in Appendix A: Community and Stakeholder Engagement.</i>	<ul style="list-style-type: none"> • Between 21 June and 6 July 2025, EAY hosted five in-person community information pop-up stands at local markets and venues across the Gippsland region: <ul style="list-style-type: none"> ○ Saturday 21 June – Sale Producers Market ○ Saturday 28 June – Traralgon Farmers Market ○ Sunday 29 June – Stratford Market Day ○ Saturday 5 July – Trafalgar Farmers Market ○ Sunday 6 July – The Old Coal Museum in Yallourn North. • Two online information sessions (webinars): <ul style="list-style-type: none"> ○ Tuesday, 1 July between 1 pm and 2 pm ○ Thursday, 10 July between 4 pm and 5 pm • On Wednesday, 25 June 2025, the Mine Land Rehabilitation Authority (MLRA) hosted a community drop-in day at the Latrobe Valley GovHub in Morwell to discuss the broader topic of mine rehabilitation, including legislation and DMRPs. The event was attended by representatives from the Victorian government, mine licensees (including EAY), and researchers, who were all available to present information and answer questions.
	<hr/> <p>Across the seven EAY-hosted events, 166 individual interactions were recorded with a majority positive sentiment towards the idea of a pit-lake to rehabilitate the EnergyAustralia Yallourn mine site. Below is the breakdown of sentiments recorded*:</p> <ul style="list-style-type: none"> • 55 positive • 19 neutral • 4 negative • No sentiment was recorded for 89 interactions as the information was outbound only with no incoming comments <p>*Note: These sentiment numbers do not refer to survey responses and/or formal submissions.</p> <p>It is estimated that ~40 community members attended the MLRA event; however, no sentiment was recorded at the event. See Appendix D: Consultation Report: Mine Rehabilitation – The Future Together</p>
What we heard	<ul style="list-style-type: none"> • A two-page summary was prepared reflecting what EAY heard during consultation with key stakeholders and the community before and during the 60-day exhibition period. This summary was made available at www.yallourntransition.com.au.
Submissions	<ul style="list-style-type: none"> • Twenty-two formal submissions were lodged during the 60-day exhibition period via email, comprising of 18 organisations and 4 individuals. 38 survey responses were also lodged. All feedback has been collated into a consultation register along with all submissions and provided in Appendix G of the DMRP.

Stakeholder and Community Feedback

A variety of views were recorded during the engagement program, sourced from the general public, community, stakeholders, organisations and individuals. The majority of community members we spoke to at the in-person events and via the online survey expressed their support for the plan to rehabilitate the Yallourn mine into a lake for future recreational use. Reasons for supporting the rehabilitation plan ranged from excitement about the mine's future use to acknowledging that there are no other viable alternatives, leaving a lake as the preferred rehabilitation solution.

Of the issues causing concern across all the avenues of feedback, water use, environmental impacts, and land stability in and around the mine were most frequently raised. These were a focus of a number of the formal submissions received via email.

Key themes

Data collected at in-person events, via the survey, and from formal submissions, garnered ~690 individual comments on a wide range of topics, consolidated into nine distinct themes. **Figure 3** illustrates the topics we heard by the frequency with which they were raised.

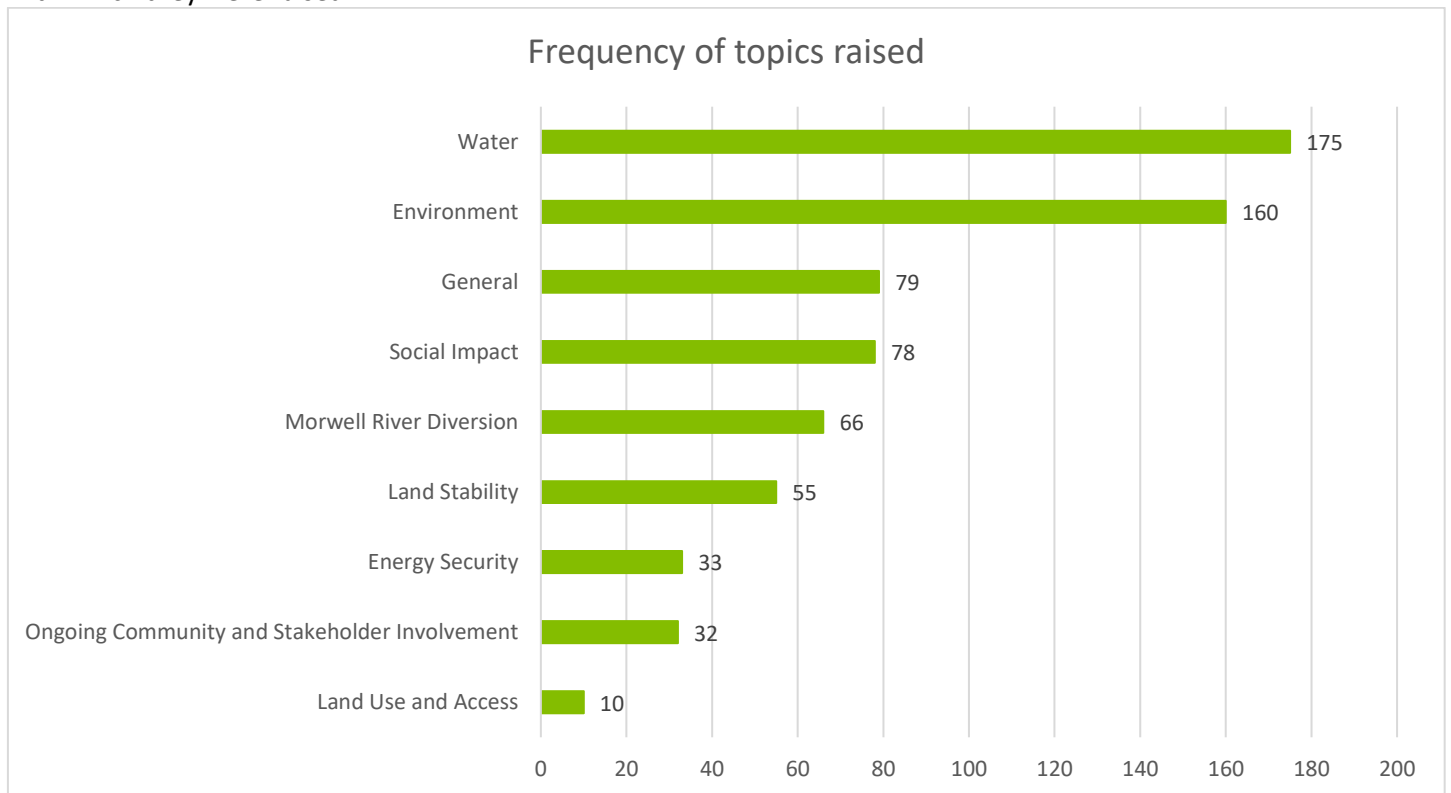


Figure 3: Frequency of topics raised

Water

The community raised concerns about using water to fill the lake and the potential negative impact this might have in an area prone to drought. There was interest in how the recently proposed increase to water prices might affect the plans for rehabilitation. The community also asked questions about flood risks associated with climate change and whether the lake would mitigate risks, or cause more impacts.

Environment

Stakeholders had questions about how the introduction of a large lake might impact the biodiversity of the flora and fauna in the area. They also saw the lake as an opportunity to enhance the environment and even showcase it through tourism opportunities, such as installing wildlife viewing platforms and building a conservation studio. Some stakeholders were concerned about contamination, such as per- and polyfluoroalkyl substances (PFAS) in the water and

surrounding soils. Environmental concerns extended past the site boundary to include the Latrobe River system and downstream Gippsland Lakes.

General

General feedback on the DMRP included broad reflections on governance, policy alignment, and regional planning. Stakeholders expressed expectations for transparency, long-term oversight, and integration with wider environmental and economic strategies. These comments were not technical but highlighted the importance of trust, clarity, and consistency in rehabilitation planning.

Social Impact

With EAY as a major employer in the area, stakeholders raised concerns about the workforce and potential increases in unemployment, leading to adverse impacts on the local economy. Many were impressed with the EAY workforce transition program and the funding it provides to support workers in training for other disciplines or upskilling their current knowledge base.

Many were excited about the potential economic benefits from tourism at the lake. The community was also interested in how EAY might support community initiatives and projects.

Morwell River Diversion

Long term plans for the Morwell River Diversion (MRD) to ensure the flow of the Morwell River to the Latrobe River was a common theme. If the MRD collapses and the Morwell River enters the pit then this could have negative environmental impacts for the Morwell River, the receiving Latrobe River and downstream Gippsland Lakes.

Land Stability

Stabilisation of the land was another concern, relating to both the mine, Morwell River, Morwell River Diversion and the Latrobe River, with comments about water filling underground voids leading to increased pressure underground.

Energy Security

Most stakeholders engaged supported the move away from coal power to renewable energy sources. At the same time, many respondents expressed concerns about energy security and whether the Victorian renewable energy sources would be ready in time and reliable as a replacement for Yallourn 'W' Power Station. A small number of stakeholders opposed renewable energy and instead supported new, cleaner coal-fired power stations and nuclear power.

Ongoing Stakeholder and Community Involvement

Generally, the community and key stakeholders want to understand the plan better and continue to be kept informed as the process continues. Some stakeholders were interested to know how their feedback would be addressed and incorporated into the DMRP. Engagement with local Traditional Owners indicated their support for partnering with EAY.

Land Use and Access

Several ideas for the future use of the lake were captured and are provided in the section headed "Community ideas for future use of a lake" on page 12. A small number of respondents want to see the land returned to farming.

All feedback has been thoroughly assessed and, where appropriate, addressed in the final DMRP. A high-level summary of this is provided in **Table 2: Summary of community interests and views (pp.13-14)**.

Sentiment

Figure 4 illustrates the sentiment captured during the 60-day exhibition period, including the in-person events and online survey. Further analysis of the engagement data is provided in **Appendix A: Community and Stakeholder Engagement**.

EAY representatives gauged sentiment at the in-person events by either analysing comments or asking directly. Not all interactions resulted in an assessment of sentiment, for example, when community members were reluctant to engage at in-person events or did not speak during webinars. In these instances, the interactions were one-way, with EAY sharing information and receiving no response. While commentary from the 22 formal submissions and 38 survey responses has been considered in the final plan, no presumption of sentiment has been assigned to that data.

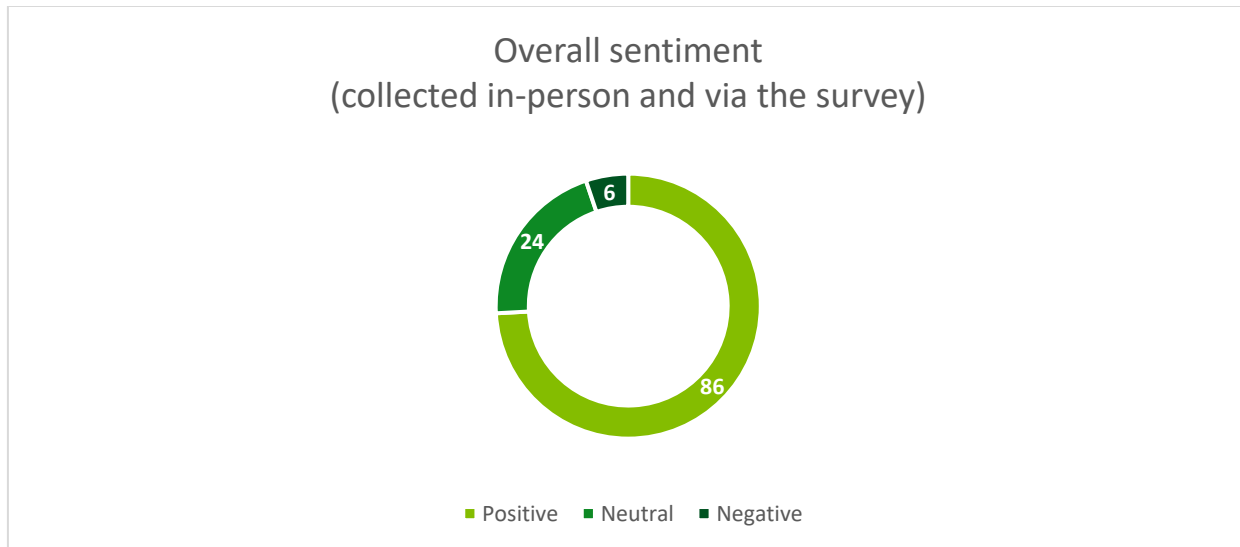


Figure 4: Overall Sentiment

Community ideas for future use of a lake

The EAY Project team observed considerable interest and excitement from participants regarding the potential for future recreational activities at the site. Many ideas were captured from the community at the in-person engagement events. Some of the ideas included interesting comments such as:

- Cycling and walking trails (including underground)
- Water sports or snowboarding
- Building foundations for structures such as boat ramps before it is filled
- Infrastructure for camping
- Filling the lake with fish
- Edible landscapes
- Conservation areas for wildlife spotting/ environment studio
- Floating solar farm
- Lakeside residential and recreational commercial, like cafes
- Turn the pit into the Eden Project from the UK
- Chill areas
- An area/exhibit to showcase the history of the old Yallourn township

Consideration of feedback in the DMRP

EAY has reviewed and considered all comments and concerns raised, and where necessary, has updated the DMRP to address these issues or better explain the plan. Considering the volume of previous engagement undertaken, many of the concerns raised were familiar to the team and had already been addressed within the plan.

Table 2 provides a high-level summary of the themes heard during community consultations. A comprehensive DMRP Feedback Register is included in Appendix G of the DMRP. The register details where in the DMRP the topic or issue raised is addressed, and if the feedback received led to changes to the plan.

Table 2: Summary of community interests and views

Theme/topic	Comment/concern	Response to theme
Water	<ul style="list-style-type: none"> Concerns that the proposed lake is a waste of water in a drought location Concerns about risks of contamination in the water Concerns that climate change might lead to the risk of future lake flooding Interest in whether the plan remains viable if the price of bulk water entitlements increases 	<ul style="list-style-type: none"> Climate change is factored into our water balance modelling and EAY will follow the directions of the Minister for Water for any water access conditions. The predicted lake water quality has been modelled, and further work is planned to incorporate this modelling with other areas of study such as lake stratification and ecological assessments. During lake filling, there is the potential for the lake to assist in mitigating downstream flood impacts. Once full, the lake could overflow during high rainfall events, but overall EAY will need to provide top-up water to maintain the lake level. The proposed price of water is an important consideration for how rehabilitation is implemented and may impact on timelines.
Environment	<ul style="list-style-type: none"> Interest in how a lake will impact the biodiversity of the area, and if any adverse impacts are known Concerns about risks of contamination in the surrounding soil 	<ul style="list-style-type: none"> An increase in biodiversity is likely since the mine void will be replaced with a water body and additional revegetation around the site will be completed. EAY is confident that the technical studies provide the information required to plan the rehabilitation of the mine and avoid adverse impacts. All potentially contaminated areas are investigated and managed in accordance with statutory guidelines and legislation to ensure that the land supports the respective post mining land use.
Social impact	<ul style="list-style-type: none"> Concern that the reduction in jobs will lead to adverse economic impacts for the region Excitement for future recreation opportunities 	<ul style="list-style-type: none"> We have a comprehensive Transition Program to help Yallourn workers transition into other job roles within or external to EA, or to move into retirement. Our aspiration is to create a lake that can support recreational use and be an asset for all to enjoy.

Theme/topic	Comment/concern	Response to theme
Morwell River Diversion	<ul style="list-style-type: none"> • Interest in how the river diversion will work • Concern for the long term stability of the Morwell River 	<ul style="list-style-type: none"> • EAY intends to maintain the Morwell River Diversion (MRD) in its current location with some improvements to support long term stability.
Stabilisation	<ul style="list-style-type: none"> • Concerns about the stabilisation of the mine and the Latrobe River • Concerns the water will get into the underground mine voids, build pressure and cause slides 	<ul style="list-style-type: none"> • EAY is confident that the technical studies provide the information required to plan the rehabilitation of the mine and avoid adverse impacts.
Energy security	<ul style="list-style-type: none"> • Concerns about energy security and the reliability of renewable sources to replace Yallourn • Support for the Project's contribution to Australia's renewable energy targets and filling the gap 	<ul style="list-style-type: none"> • EnergyAustralia operates a diverse and flexible generation portfolio providing 4.8GW across NSW, Victoria, and South Australia. In the Latrobe Valley, it operates the Jeeralang Gas-fired Power Station and is managing the construction of the Wooreen Energy Storage System (a grid-scale battery) for a joint venture in which it is a 50% owner. Not only do these two sites contribute to ongoing energy security and grid stability, but they also ensure EnergyAustralia's continued connection to the proud history of energy generation in the Latrobe Valley.
Community and stakeholder involvement	<ul style="list-style-type: none"> • Seeking clarity on how feedback will be incorporated into the plan • Support for partnerships with traditional owners • Interest in staying informed and continuing to have opportunities to contribute towards the final solution 	<ul style="list-style-type: none"> • We will continue to collaborate with community to understand aspirations and engage with relevant stakeholders to explore how we can support delivery of opportunities that align with this long-term vision.
Land use and access	<ul style="list-style-type: none"> • Interest in whether any of the land will be sold • Support for commercial opportunities • Tourism should be a focus 	<ul style="list-style-type: none"> • A number of requests have been received for long-term access to the land for commercial and recreation opportunities. • Decisions have not been made about the long-term ownership and use of the land. We will continue to work with key stakeholders across community, council and industry to identify suitable future land uses and ownership arrangements that are consistent with DMRP outcomes and the continued use of Yallourn to support energy security in Victoria.

Ongoing and Future Engagement

Following the DMRP submission, EAY will continue to engage with the community and stakeholders. EAY remains committed to ongoing, meaningful, genuine, informed, and transparent engagement that goes beyond meeting regulatory requirements. The DMRP CSEP will be updated, as required, based on matters raised through the DMRP consultation. Additional stakeholders identified during the DMRP consultation will be included as appropriate.

With the dedicated EAY Community Engagement Team remaining in place beyond the submission of the DMRP, EAY is well-positioned to continue meeting the ongoing engagement needs throughout the Project's lifetime.

Key strategies to maintain trust, address enquiries and complaints, and continue to build positive relationships with the community and stakeholders include, but are not limited to:

- Regular communication and updates through newsletters, fact sheets, and updates on the Project website
- Continuing to host site visits and tours, maintaining interest and engagement in the rehabilitation of the Yallourn mine with key stakeholders and the community
- Dedicated contact points via email and telephone
- Enquiry and complaints handling procedure
- Continuously and proactively seeking feedback, to understand and respond to community and stakeholder expectations and concerns
- Document consultation processes to demonstrate compliance with regulatory requirements

Appendices

Appendix A: Community and Stakeholder Engagement Summaries

Community information sessions

Table 3: List of in-person or online events held during the 60-day exhibition period

Date	Time	Event
Saturday, 21 June	8 am to 12 pm	Sale Producers Market
Wednesday, 25 June	11:30 am to 5 pm	The Mine Land Rehabilitation Authority 'Declared Mine Rehabilitation Plan and Key Legislation Information Session' Latrobe Valley GovHub, 65 Church St, Morwell
Saturday, 28 June	8 am to 12 pm	Traralgon Farmers Market
Sunday, 29 June	9 am to 1 pm	Stratford Market Day
Tuesday, 1 July	1 pm to 2 pm	Online webinar # 1
Saturday, 5 July	9 am to 1 pm	Trafalgar Farmers Market
Sunday, 6 July	10 am to 2 pm	Old Brown Coal Mine Museum, Yallourn North (Free Entry)
Thursday, 10 July	4 pm to 5 pm	Online webinar # 2

Table 4: Breakdown of interactions, sentiment, and number of people who commented, by event

Event	Total interactions*	Positive	Neutral	Negative	Asked questions and/or made comments
Sale Producers Market	17	4	4	0	7
Traralgon Farmers Market	33	13	7	2	23
Stratford Market Day	28	23	4	0	27
Trafalgar Farmers Market	47	13	1	2	19
Old Brown Coal Mine Museum, Yallourn North	12	2	3	0	5
Online Webinar # 1	16	-	-	-	3
Online Webinar # 2	13	-	-	-	5
	166	55	19	4	89

* Some interactions were outgoing information sharing only, with no sentiment captured.



Figure 4: Community sentiment by in-person event

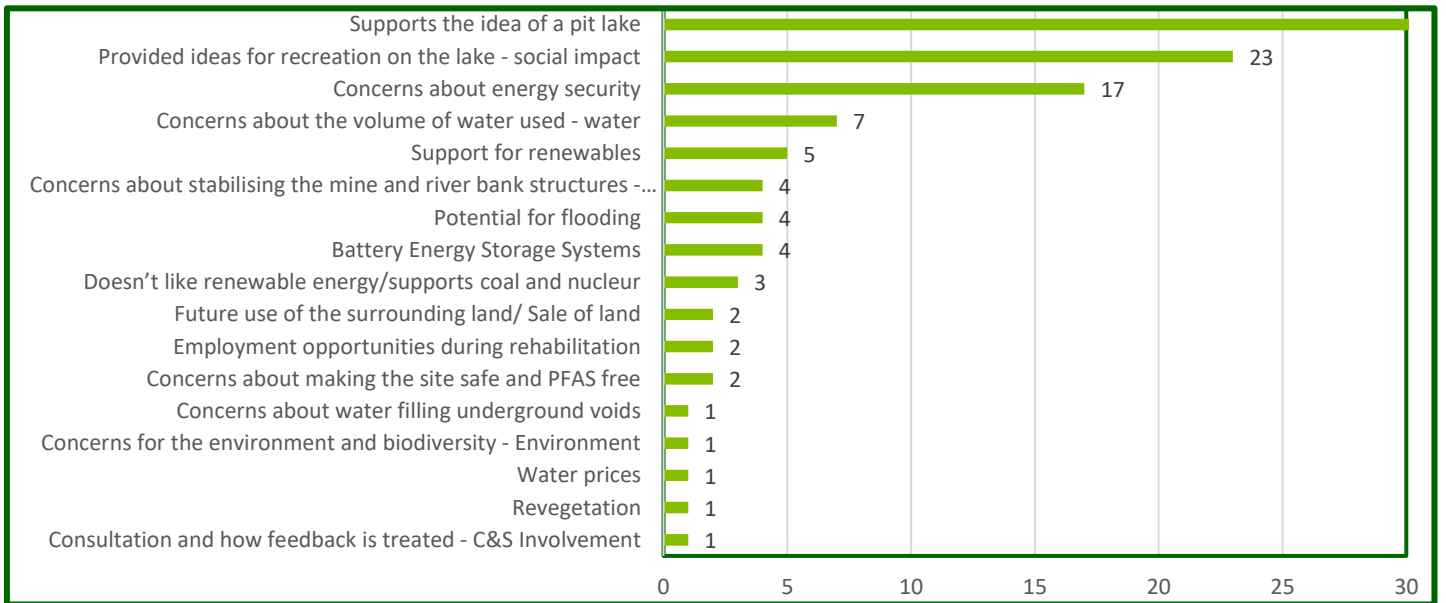


Figure 5: Frequency of topics raised at the in-person engagement events

In-person events

Sale Producers Market is a monthly market located in the showgrounds on the outskirts of the town. The market was a mix of craft, food and Information stalls and was the second smallest of the markets attended, with approximately 25 stallholders. Attendees ranged from those over 60 to a small number of young families. The EAY stand primarily attracted interest from people in the 50-plus age range.



Community information stand at the Sale Producers Market on Saturday, 21 June 2025

Traralgon Farmers Market is a monthly market held in the town centre, run by the Traralgon Lions Club. The market was a mix of craft, produce, food, and information stalls and was, by far, the largest market, with approximately 60 stallholders. Attendees ranged from those aged over 60 to young families. The EAY stand primarily attracted interest from people in the 30-plus age range.



Community information stand at the Traralgon Farmers Market on Saturday, 28 June 2025

Stratford Market Day is a monthly market held in and outside the Scout Hall situated within residential streets. The market is a mix of craft and food stalls and was the smallest of the markets attended, with approximately 18 stallholders. Attendees ranged from those aged over 60 to many young families. The EAY stand primarily attracted interest from people in the 30-plus age range.



Community information stand at the Stratford Market Day on Sunday, 29 June 2025

Trafalgar Farmers Market is a monthly market in a community park within a residential area. The market was a mix of craft, produce and food stalls and, while not the largest of the markets, it felt like the busiest, and attracted the most interactions for EAY. Attendees ranged from those aged over 60 to those in their 20s. The EAY stand primarily attracted interest from people in the 40-plus age range.



Community information stand at the Trafalgar Farmers Market on Saturday, 5 July 2025

The Old Brown Coal Museum in Yallourn North is run by the Yallourn North Historical Society (YNHS). EAY made a donation to the YNHS in exchange for free entry into the museum for our event. This was the least attended event of the program. The EAY stand primarily attracted interest from people in the 40-plus age range.



Community information stand at the Old Coal Mine Museum in North Yallourn on Sunday, 6 July 2025

Online webinar information sessions

A 66-slide presentation was delivered across two sessions, providing a history of the site, an explanation of the technical reasons why a pit-lake is the only viable option, and reiterating the communications channels for questions, submissions, and access to the online survey.

The webinars were attended by a total of 29 community members, who raised eight questions that were answered live, with no questions taken on notice. Example slides from the 66-slide presentation are provided in **Appendix B: Advertising and Project Collateral**.

Online survey

A 14-question online survey was live during the 60-day exhibition period, seeking to understand the community's knowledge of and sentiment towards the DMRP and providing an opportunity for feedback. The survey was advertised via a QR code and link on the Project website, in the advertising campaign, on the EAY Facebook page, and verbally at in-person engagement events. Hard copies were also made available at eight local libraries across Gippsland.

Table 5: Survey respondents by age

Age range	Total Respondents	%
18 - 24	1	3%
25-29	0	0%
30-34	4	11%
35-39	4	11%
40-44	5	14%
45-49	2	6%
50-54	5	14%
55-59	6	17%
60 -64	4	11%
65+	4	11%

Many community members categorised themselves across multiple community groups as shown in **Table 6** below.

Table 6: Survey respondents by community group

Community group	Total interactions*
Agriculture/farming	3
Community group / not-for-profit organisation	9
Business or small business	2
Industry association	2
Government (local, state, federal)	1
Energy Industry	10
Research	3
Individual	20
Prefer not to say	2
Other	3

Formal submissions

Twenty-two (22) formal submissions were collected during the 60-day exhibition period. The raw data has been categorised and provided in Appendix G of the DMRP.


Appendix B: Advertising and Project Collateral

The following information refers to the advertising and project collateral that was utilised during the 60-day public exhibition period and is provided here as evidence.

Advertising

EnergyAustralia announced the 60-day exhibition period with a public notice in the Latrobe Valley Express, and promotion continued throughout the exhibition period with advertisements on the EA Facebook social media account and through a range of other communication means.

PUBLIC NOTICE



EnergyAustralia Yallourn Pty Ltd Draft Declared Mine Rehabilitation Plan (DMRP)
Mineral Resources (Sustainable Development) Act 1990 (Vic), EnergyAustralia Yallourn Pty Ltd in accordance with regulation 64H of the Mineral Resources (Sustainable Development) (Mineral Industries) Regulations 2019 (Vic).

EnergyAustralia Yallourn Pty Ltd (ABN 47 065 325 224) is the licensee of MINS003 (5,173 ha); MINS216 (152 ha); and MINS304 (83 ha) collectively known as the Yallourn Mine.

The Yallourn Mine provides coal to the Yallourn Power Station which will close in mid-2028. The Draft DMRP provides detail on the licensee's vision to transform the Yallourn site into a landscape that enables ongoing prosperity and amenity for all. One that is an example of what can be achieved when business, government, communities, and custodians of the land work together.

The key elements of the Draft DMRP are:

- Rehabilitation Vision (Post-Mining Land Use)
- Closure Objectives and Criteria
- Traditional Owner Partnership
- Stakeholder Engagement
- Risk Assessment
- Implementation Plan
- Post-Closure Plan



The Draft DMRP also contains information in relation to the licensee's system for managing the impacts of the plan on the community and the environment and its plan for ongoing consultation with the community and stakeholders.

The Draft DMRP will be on public exhibition for sixty (60) days between **18 / 6 / 2025** and **18 / 8 / 2025**. The licensee invites and is seeking submissions from the public and other interested parties on the Draft DMRP.

Submissions can be made by anyone within the 60 days that the Draft DMRP is on public exhibition via the website www.yallourntransition.com.au or by writing directly to the licensee at community.yallourn@energyaustralia.com.au or by mail to EnergyAustralia Yallourn, PO Box 444, Moe, Victoria, 3825.

For more information on the Draft DMRP, please contact us at:

Address: EnergyAustralia Community Hub, 228 Commercial Road Morwell
Postal Address: EnergyAustralia Yallourn, PO Box 444, Moe VIC 3825.
Website: www.yallourntransition.com.au
Email: community.yallourn@energyaustralia.com.au
Phone: 1800 574 947



YALLOURN MINE
ORIGINAL SCALE 1: 10,000
METRES 500 1000 1500 2000 2500

MINE LICENCE BOUNDARY No 5003
MINE LICENCE BOUNDARY No 5216
MINE LICENCE BOUNDARY No 5304

Figure 6: Public notice to announce the DMRP 60-day exhibition period. First published on 18 June 2025.

A four-week advertising campaign was published in three local newspapers, detailing six in-person engagement sessions and two online webinars, as well as ways to 'Have Your Say' (through an online survey and email feedback). All publications were distributed in print and made available on the papers' websites.

Use the QR code to find out more

Yallourn Mine: Have your say

In-person

- Sale Producers Market
Sat 21 June | 8am - 12pm
- Traralgon Farmers Market
Sat 28 June | 8am - 12pm
- Stratford Market Day
Sun 29 June | 9am - 1pm
- Traralgar Farmers Market
Sat 5 July | 9am - 1pm
- Old Brown Coal Mine Museum,
Yallourn North (Free Entry)
Sun 6 July | 10am - 2pm

Drop in
Morwell Community Hub, 228 Commercial Road
Tuesdays and Wednesdays | 10am - 3pm or by appointment

Online webinar

- Tue 1 July | 1pm - 2pm
- Thu 10 July | 4pm - 5pm

Scan the QR Code to register your attendance or email the team at: community.yallourn@energyaustralia.com.au

Mine Land Rehabilitation Authority 'Declared Mine Rehabilitation Plan (DMRP) and Key Legislation Information Session'
Latrobe Valley GovHub, 65 Church Street Morwell
Wed 25 June | 11.30am - 5pm

Draft Declared Mine Rehabilitation Plan

EnergyAustralia
LIGHT THE WAY

Figure 7: Advertisement for community information stands



PRESENTS

MINE REHABILITATION: THE FUTURE TOGETHER

Are you interested in the future of the Latrobe Valley's Declared Mines?

- Speak with mine licensees about closure planning and the development of Declared Mine Rehabilitation Plans (DMRPs)
- Learn about the regulatory processes involved
- Connect with government representatives and researchers
- Hear about the Collaborative Planning for Post-Mining Development in the Latrobe Valley project

Wednesday 25 June 2025

11:30am - 5:00pm

Latrobe Valley GovHub,
65 Church St, Morwell

Refreshments provided

MORE INFORMATION

www.mineland.vic.gov.au



Figure 8: Social media post to advertise the MLRA event - EnergyAustralia Yallourn Facebook



EnergyAustralia Yallourn

Published by David Burt · 24 June · 🌐



On Wednesday you can find the EnergyAustralia Yallourn team at the Mine Land Rehabilitation Authority event:

Mine Rehabilitation
- The Future Together

Between 11am and 5.30pm at the Gov Hub Building in Church Street, Morwell.

If you'd like to chat with an EnergyAustralia customer team member, call into our Community Hub on Wednesdays between 10am and 3pm, located at 228 Commercial Road Morwell.



PRESENTS

MINE REHABILITATION: THE FUTURE TOGETHER

Are you interested in the future of the Latrobe Valley's Declared Mines?

- Speak with mine licensees about closure planning and the development of Declared Mine Rehabilitation Plans (DMRPs)
- Learn about the regulatory processes involved
- Connect with government representatives and researchers
- Hear about the Collaborative Planning for Post-Mining Development in the Latrobe Valley project

Wednesday 25 June 2025

11:30am - 5:00pm

Latrobe Valley GovHub,
65 Church St, Morwell

Refreshments provided

MORE INFORMATION

www.mineland.vic.gov.au



Mine Land Rehabilitation Authority

10 June · 🌐

Mine Rehabilitation: The Future Together
Community Event... See more

Figure 9: Social media post from 24 June 2025 - EnergyAustralia Yallourn Facebook



EnergyAustralia Yallourn

Published by Sprinklr Prod2 · 18 June ·



Declared Mine Rehabilitation Plan (DMRP)!

We're working to transform the Yallourn site into a place that locals and visitors can enjoy, while also providing potential economic opportunities for the Latrobe Valley.

For over 100 years, Yallourn has powered Australian lives. As we move towards closing the power station and coal mine in mid-2028, EnergyAustralia is committed to honouring this proud history.

What is the DMRP? The DMRP is our plan to make the mine site safe, stable, and sustainable by filling the mine voids with water to create a lake for everyone to enjoy, including wildlife. This approach has been supported by decades of modelling and investigations.

The draft DMRP covers various technical areas such as geology, groundwater, surface water, climate, floods, water quality, flora, fauna, cultural heritage, seismic activity, environmental impact, community views, and stability risks.

We want to hear from you! Share your thoughts and help shape the future of the Yallourn site. Your feedback is crucial to our planning process. <https://www.yallourntransition.com.au/have-your-say>

Have your say on the Draft Yallourn Declared Mine Rehabilitation Plan

Click to Learn more



EnergyAustralia
LIGHT THE WAY

Figure 10: Figure 2: Social media post - EnergyAustralia Yallourn Facebook



EnergyAustralia Yallourn

Published by Sprinklr Prod2 · 27 June at 09:00 · 🌐



Interested in learning more about the Declared Mine Rehabilitation Plan (DMRP)?

Come and have a chat with us!

Find out more: <http://ms.spr.ly/61885II02>

Come and have a chat this weekend!

We'll be at the:

Traralgon Farmers Market
Saturday 28 June 8am -12pm

Stratford Market Day
Sunday 29 June 9am - 1pm

yallourntransition.com.au



EnergyAustralia

Figure 11: Figure 2: Example social media post to advertise engagement events - EnergyAustralia Yallourn Facebook

Three times the fun on Buln Buln property

A special, and rare, event occurred at a Buln Buln cattle stud last month as its very old mums to be 'Waldorf Mary' were milled.

The stud, which is owned by the family of what was Drouin of Drouin Park, has been a landmark in the area for many years. The mums were milled on the 10th of June, and the event was a great success. The mums were milled on the 10th of June, and the event was a great success. The mums were milled on the 10th of June, and the event was a great success.

Drought support expanded

On-farm drought infrastructure grants are now available as part of the State Government's drought support package.

The program, managed by Rural Finance, makes available concentrations grants of \$1000 for all primary producers across the state.

Expanding former Bushfire, the program provides grants to help with infrastructure that is essential for the long-term viability of the farm, such as fencing, water supply, and other infrastructure.

Applications are now open for the program. For more information, visit www.ruralfinance.vic.gov.au.

Non-waiting expert physiotherapy services to the community

At Sky Physio, we offer a range of services to help you get back on your feet. Our experts are here to help you with a variety of conditions, including:

- Spinal rehabilitation
- Chronic pain management
- Stroke rehabilitation
- Work-related injury
- Prevention of injury

Call us today to book your appointment. www.skyphysio.com.au

Yallourn Mine: Have your say

Yallourn has powered Victoria for over a century. Now is the time to think about what comes next. EnergyAustralia Yallourn invites you to learn about the site's future, as outlined in the Draft Declared Mine Rehabilitation Plan—and to share your thoughts.

Find out more at one of our community information sessions:

- In-person:** Sale Producers Market (Sat 29 June | 8am - 12pm), Traralgon Farmers Market (Sat 29 June | 8am - 12pm), Stafford Market Day (Sun 29 June | 9am - 1pm), Traralgon Farmers Market (Sat 30 July | 10am - 2pm), Old Brown Coal Mine Museum, Yallourn North (Fri 5 July | 10am - 2pm)
- Online webinar:** Tue 1 July | 5pm - 7pm, Thu 12 July | 4pm - 5pm

Click the QR code or use your mobile phone camera to scan the QR Code to register your attendance.

Visitor destinations feature in new welcome signage

New entry signage featuring the historical streets of Warragul and the iconic Bridge of Noyah will be installed to welcome travellers to Baw Baw Shire.

The signage, designed by local experts, will feature images of the town's history and the surrounding landscape. The signage is currently being installed at the entrance to the shire.

Youths arrested after crash

Five teenagers, including two boys from Longwarry, were arrested after a stolen vehicle crashed into a power pole in Morwell.

The police believe the vehicle was stolen from a private property in Longwarry. The teenagers are currently being held in custody.

Weapons seized

Weapons and a quantity of drugs were seized after a search warrant was executed at a property on Friday.

The search was conducted by police officers from the Longwarry and Morwell divisions. The weapons include a handgun and a rifle.

24 June 2025

Confirmation sought on parks backdown

A local politician is demanding confirmation from the State Government to backdown on plans to fund the National Park.

The politician, who is a member of the Victorian Greens, has written to the Minister for Environment and Energy. The politician is concerned about the impact of the backdown on the environment.

Wiring and pipes stolen

Wiring and pipes have been reported stolen from a house under construction in Drouin.

The police are currently investigating the theft. The stolen items include electrical wiring, pipes, and other building materials.

Graffiti tags reported

Black graffiti tags were reported on two locations in Warragul on Saturday night.

The graffiti was found on a wall and a fence. The police are currently investigating the tags.

Bakers Delight WARRAGUL CENTREPOINT

FREE LOAF OR ROLLS GET AN EVERYDAY BLOCK LOAF OR EVERYDAY ROLL 6 PACK WHEN YOU PRESENT THIS COUPON IN-BAKERY!

Centrepoint Area, 20-24 Palmerston St, Warragul, VIC 3103

1 July Latrobe Valley Express (34,894 weekly circulation)

PUBLIC NOTICE

EnergyAustralia Yallourn Pty Ltd Draft Declared Mine Rehabilitation Plan (DMP) and Key Legislation Information Session.

The DMP provides information on the proposed rehabilitation of the Yallourn mine. The plan includes details on the mine's future, the rehabilitation process, and the impact on the community.

LAVALLA CATHOLIC COLLEGE

TEACHING POSITIONS ENGLISH HUMANITIES

With a combination of other methods, Latin and English, we offer a flexible and supportive environment. We are currently seeking experienced teachers for the following positions:

- English
- Humanities

Yallourn Mine: Have your say

Yallourn has powered Victoria for over a century. Now is the time to think about what comes next. EnergyAustralia Yallourn invites you to learn about the site's future, as outlined in the Draft Declared Mine Rehabilitation Plan—and to share your thoughts.

Find out more at one of our community information sessions:

- In-person:** Sale Producers Market (Sat 29 June | 8am - 12pm), Traralgon Farmers Market (Sat 29 June | 8am - 12pm), Stafford Market Day (Sun 29 June | 9am - 1pm), Traralgon Farmers Market (Sat 30 July | 10am - 2pm), Old Brown Coal Mine Museum, Yallourn North (Fri 5 July | 10am - 2pm)
- Online webinar:** Tue 1 July | 5pm - 7pm, Thu 12 July | 4pm - 5pm

LAVALLA CATHOLIC COLLEGE

ADMINISTRATION ASSISTANT

We have an opportunity for an Administration Assistant to support the Catholic Identity and Mission of the College. The role involves providing administrative support to the school's operations.

8 July

Yallourn Mine: Have your say

Yallourn has powered Victoria for over a century. Now is the time to think about what comes next. EnergyAustralia Yallourn invites you to learn about the site's future, as outlined in the Draft Declared Mine Rehabilitation Plan—and to share your thoughts.

Find out more at one of our community information sessions:

- In-person:** Sale Producers Market (Sat 29 June | 8am - 12pm), Traralgon Farmers Market (Sat 29 June | 8am - 12pm), Stafford Market Day (Sun 29 June | 9am - 1pm), Traralgon Farmers Market (Sat 30 July | 10am - 2pm), Old Brown Coal Mine Museum, Yallourn North (Fri 5 July | 10am - 2pm)
- Online webinar:** Tue 1 July | 5pm - 7pm, Thu 12 July | 4pm - 5pm

18 June 2025

Yallourn Mine: Have your say

Yallourn has powered Victoria for over a century. Now is the time to think about what comes next. EnergyAustralia Yallourn invites you to learn about the site's future, as outlined in the Draft Declared Mine Rehabilitation Plan—and to share your thoughts.

Find out more at one of our community information sessions:

- In-person:** Sale Producers Market (Sat 29 June | 8am - 12pm), Traralgon Farmers Market (Sat 29 June | 8am - 12pm), Stafford Market Day (Sun 29 June | 9am - 1pm), Traralgon Farmers Market (Sat 30 July | 10am - 2pm), Old Brown Coal Mine Museum, Yallourn North (Fri 5 July | 10am - 2pm)
- Online webinar:** Tue 1 July | 5pm - 7pm, Thu 12 July | 4pm - 5pm

16 June 2025



EnergyAustralia

LIGHT THE WAY

EnergyAustralia Yallourn Pty Ltd
ABN 47 065 325 224

Eastern Road
Yallourn VIC 3825

Phone +61 3 5128 2000
Facsimile +61 3 5128 2200

energyaustralia.com.au

Dear Resident,

Re: Yallourn Draft Declared Mine Rehabilitation Plan

Yallourn has helped power the lives of Australians for over 100 years.

EnergyAustralia Yallourn is committed to honouring this proud history as we work towards closing the power station and coal mine in June 2028.

Our vision for the Yallourn site is that it becomes a place locals and visitors can enjoy and provides potential economic opportunities for the Latrobe Valley.

The public exhibition of the draft Yallourn Declared Mine Rehabilitation Plan (DMRP) is the next step towards recognising this vision. The DMRP is our plan to make the mine site safe, stable and sustainable, filling the mine voids with water with a view to creating a lake that locals and visitors can enjoy and wildlife calls home. Since first being proposed as the rehabilitation solution by the State Electricity Commission in the early to mid-1990s, subsequent modelling and investigations by industry experts and EnergyAustralia Yallourn has supported this solution.

The DMRP covers a wide range of areas, including geology, groundwater, surface water, climate, floods, water quality, flora, fauna, cultural heritage, seismic activity, environmental impact, community concerns, and stability risks.

We value your input and invite you to review the draft DMRP for the Yallourn Mine during its public exhibition over 60 days, from 18 June to 18 August 2025. Your feedback is crucial in shaping a final DMRP that considers the views of stakeholders and the community.

Key Dates:

Public Exhibition Period: 18 June - 18 August 2025
Submission Deadline: 18 August 2025

Community Information Sessions

To learn more about the DMRP, we will be available at the below community events, and are also hosting two online information sessions. Please see the details below.

In-person:

- Sat 21 June – Sale Producers Market (8am to 12pm)
- Wed 25 June – Mine Land Rehabilitation Authority 'Declared Mine Rehabilitation Plan (DMRP) and Key Legislation Information Session', Latrobe Valley GovHub, 65 Church Street Morwell, (11.30am – 5.00pm)
- Sat 28 June – Traralgon Farmers Market (8am to 12pm)
- Sun 29 June – Stratford Market Day (9am to 1pm)
- Sat 5 July – Trafalgar Farmers Market (9am to 1pm)
- Sun 6 July – Old Brown Coal Mine Museum, Yallourn North (10am to 2pm)

Online webinar:

- Tue 1 July – 1pm to 2pm
- Thu 10 July – 4pm to 5pm

RSVP to: community.yallourn@energyaustralia.com.au to receive the online webinar link.

Other ways to get involved and have your say:

Further information, including the draft DMRP, is available on our dedicated project website at www.yallourntransition.com.au. We would also welcome your feedback through a five-minute survey. Please see the postcard included with this letter.

You can also drop-in to our Community Hub at 228 Commercial Rd, Morwell (Tues & Wed, 10am–3pm, or by appointment).

Should you have any questions, would like to make a submission or require further information, please reach out to community.yallourn@energyaustralia.com.au, call us on 1800 574 947, or direct mail to our postal address: EnergyAustralia Yallourn, PO Box 444, Moe VIC 3825

Thank you for your continued support and engagement in this important process.

Yours sincerely,



James Stevenson
Head of Yallourn

We're here to help

EnergyAustralia values community feedback. If you have any enquiry, would like to make a submission, raise a complaint, or need any further information on the Yallourn Declared Mine Rehabilitation Plan, please contact us:

- ✉ community.yallourn@energyaustralia.com.au
- ☎ 1800 574 947
- 📍 PO Box 444, Moe, Victoria, 3825
- 🌐 www.yallourntransition.com.au



Figure 12: Letter to adjacent landowners to announce the DMRP and 60-day exhibition period

Print and digital collateral

EAY developed a suite of collateral to support the community's understanding of the DMRP, provide avenues for feedback, and advertise opportunities for in-person engagement sessions.

Website

The www.yallourntransition.com.au website went live on 18 June 2025, coinciding with the start of the 60-day exhibition period. The website served as a central location to access all publicly available information about the DMRP and remained available throughout the exhibition period until Monday, 18 August 2025. The public notice will remain on the Project website until 21 days after submission of the DMRP to the Department Head.

The website provides the following information and feedback channels:

- **Home** page with a link to the 'Have Your Say' page
- **About** page providing:
 - a high-level history of the site
 - an overview of the plan, including the priorities, key messages, and informational videos
 - EnergyAustralia's future investment in a low-carbon energy system for Gippsland
 - details of the \$10M transition program to support the Yallourn workforce post-Yallourn
 - details of community grants and benefits delivered by EnergyAustralia Yallourn to support projects in the local region.
- **'Have Your Say'** page, which includes:
 - links to the full DMRP, plus a summary of the plan, fact sheet, appendices, and the public notice
 - a link to the community survey and other ways to provide feedback
 - details of the in-person engagement sessions.
- **News and updates**
- **Transition program portal** dedicated to the current workforce and requiring a login.

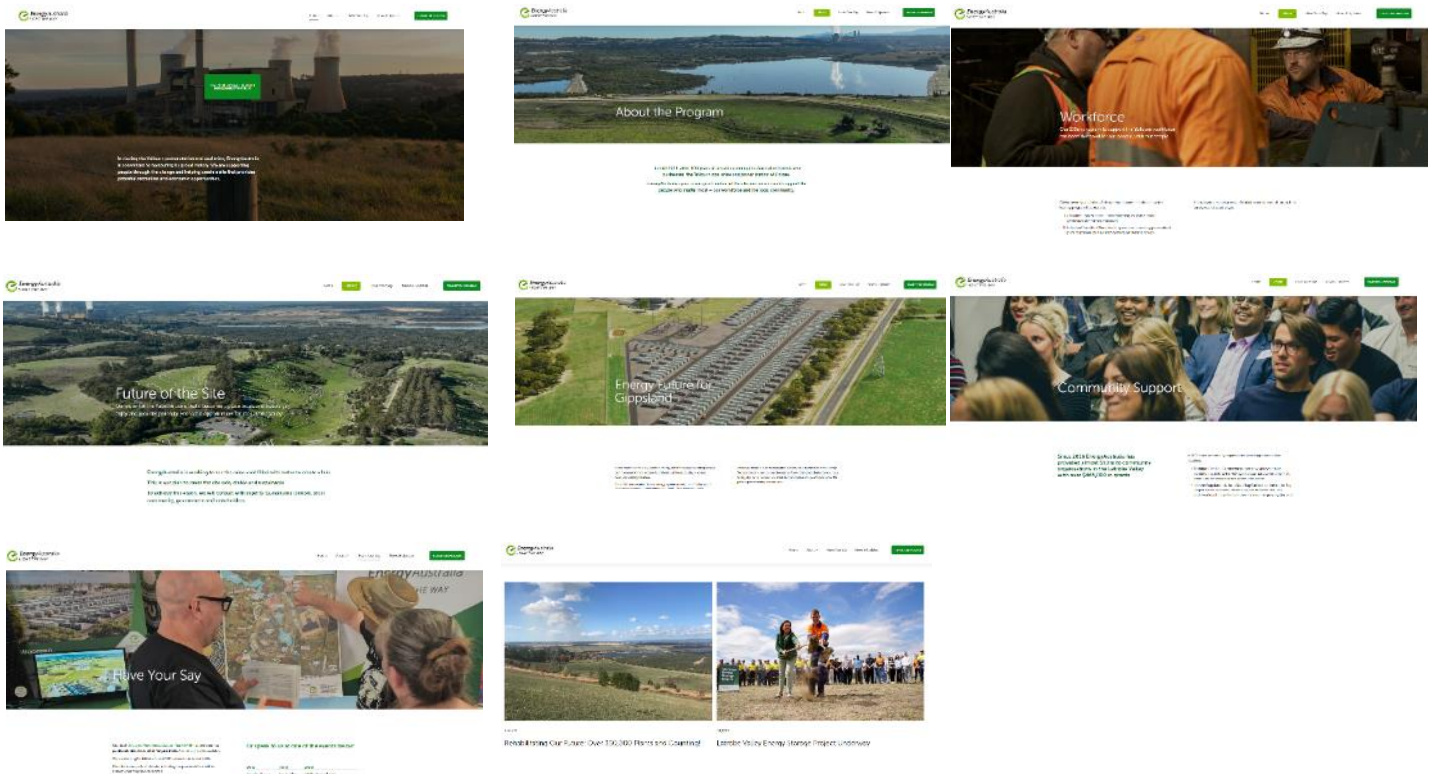


Figure 13: Sample screenshots of the www.yallourntransition.com.au webpages

Survey

A 14-question online survey was live during the 60-day exhibition period, seeking to understand the community's knowledge of and sentiment towards the DMRP and providing an opportunity for feedback. The survey was advertised via a QR code and link on the Project website, in the advertising campaign, on the EA Facebook page, and verbally at in-person engagement events. Hard copies were also made available at eight local libraries across Gippsland.

Yallourn Declared Mine Rehabilitation Plan

Have your say on the EnergyAustralia Yallourn Draft Declared Mine Rehabilitation Plan

EnergyAustralia owns the Yallourn Power Station and Mine in Victoria's Latrobe Valley. Power generation is planned to cease in 2028 at which point the site will transition to rehabilitation. EnergyAustralia Yallourn (EAY) has an obligation to prepare a Declared Mine Rehabilitation Plan (DMRP) which demonstrates how EAY will carry out mine rehabilitation activities to leave behind a safe, stable and sustainable landform.

In this short survey we'd like to hear from the community about their views on the Yallourn Draft Declared Mine Rehabilitation Plan.

We appreciate your valuable contribution.

EnergyAustralia Yallourn

* Required

1. How familiar are you with the EnergyAustralia Yallourn Draft Declared Mine Rehabilitation Plan? *

Awareness and Understanding

- Very familiar
- Somewhat familiar
- Not very familiar
- Not familiar at all

2. How did you first hear about the EnergyAustralia Yallourn Draft Declared Mine Rehabilitation Plan?

*

Information Sources

- Community events
- Social media
- Local media
- Word of mouth
- EnergyAustralia Yallourn communications
- EnergyAustralia Yallourn Facebook
- Other

3. How do you think the rehabilitation of the Yallourn Mine will impact the local community?

*

Community Impact

- Very positively
- Positively
- Neutral
- Negatively
- Very Negatively

4. What are your main concerns regarding the EnergyAustralia Yallourn Mine Declared Mine Rehabilitation Plan? (Select all that apply)

*

Key Concerns

- Environmental impact
- Water usage and quality
- Safety, stability and sustainability of the landform
- Impact on local flora and fauna
- Economic impact on the community
- Recreational and other uses
- Other

5. How would you prefer to receive updates and information about the progress of the EnergyAustralia Yallourn Draft Declared Mine Rehabilitation Plan?

*

Engagement and Participation

- Email newsletters
- Community updates
- Social media updates
- Local media articles
- EnergyAustralia website
- Other

6. Do you have any suggestions or feedback for EnergyAustralia Yallourn regarding the Draft Declared Mine Rehabilitation Plan? *

Feedback and Suggestions

Enter your answer

7. Your name (optional)

Contact Details

Enter your answer

8. Your Age (optional)

Demographics

18-24

25-29

30-34

35-39

40-44

45-49

50-54

55-59

60-64

65+

9. Your email (optional) Note: If you wish to receive updates on the EnergyAustralia Yallourn Draft Declared Mine Rehabilitation Plan, please provide your email.

Contact Details

10. Your phone number (optional)

Contact Details

Enter your answer

11. Your Address (optional)

Contact Details

Enter your answer

12. Postcode *

Contact Details

Enter your answer

13. Which group(s) are you associated with? *

Tick all that apply.

- Agriculture/farming
- Community group / not for profit organisation
- Business or small business
- Industry association
- Government (local, state, federal)
- Energy Industry
- Resources Industry

- First Nations organisations / corporation
- Research
- Individual
- Prefer not to say
- Other

14. Provide a Formal Submission to the EnergyAustralia Yallourn Draft Declared Mine Rehabilitation Plan

If you have any documents or additional information and you would like to provide a formal submission regarding the EnergyAustralia Yallourn Draft Declared Mine Rehabilitation Plan, please send your submission to community.yallourn@energyaustralia.com.au or send it to EnergyAustralia, PO Box 444, Moe, Victoria, 3825.

Please be advised that any formal submission that you provide will be included in the DMRP submission and may be made publicly available.

Enter your answer

You can print a copy of your answer after you submit

Never give out your password. [Report abuse](#)



This content is created by the owner of the form. The data you submit will be sent to the form owner. Microsoft is not responsible for the privacy or security practices of its customers, including those of this form owner. Never give out your password.

Microsoft Forms | AI-Powered surveys, quizzes and polls. [Create my own form](#)

The owner of this form has not provided a privacy statement as to how they will use your response data. Do not provide personal or sensitive information. | [Terms of use](#)

Figure 14: 14-question online survey

EnergyAustralia Yallourn Draft Declared Mine Rehabilitation Plan (DMRP) and DMRP Summary Document

The draft DMRP released as part of the 60 day public exhibition process was a 485-page document detailing the site's history and the technical studies that led to the conclusion that a pit-lake is the best solution for rehabilitation. The Summary Document provided a condensed 37-page high-level overview of the key elements and messages in the DMRP. The **DMRP** and **Summary Document** were made available as follows.

- Online: <https://www.yallourntransition.com.au>
- Full printed copies were displayed at:
 - the five engagement events in Sale, Traralgon, Stratford, Trafalgar, and the Old Coal Museum at Yallourn North
 - the EnergyAustralia Community Hub at 228 Commercial Road, Morwell, open on Tuesdays and Wednesdays or by appointment
 - local libraries in Moe, Morwell, Traralgon, Warragul, Mirboo North, Leongatha, Inverloch, and Port of Sale
 - Bairnsdale Corporate Centre, 273 Main Street, Bairnsdale.



Figure 15: Sample pages from the 485-page EnergyAustralia Yallourn DMRP, and a photo of the publicly available bound copies



Figure 16: Sample pages from the 37-page DMRP Summary Document

Webinar presentation

Below are example slides from the webinar presentation. Recordings of the sessions are available on the project website [Webinars: Declared Mine Rehabilitation Plan — Yallourn Transition](#) and via the links below:

- [Webinar - 1 July 2025](#)
- [Webinar - 10 July 2025](#)



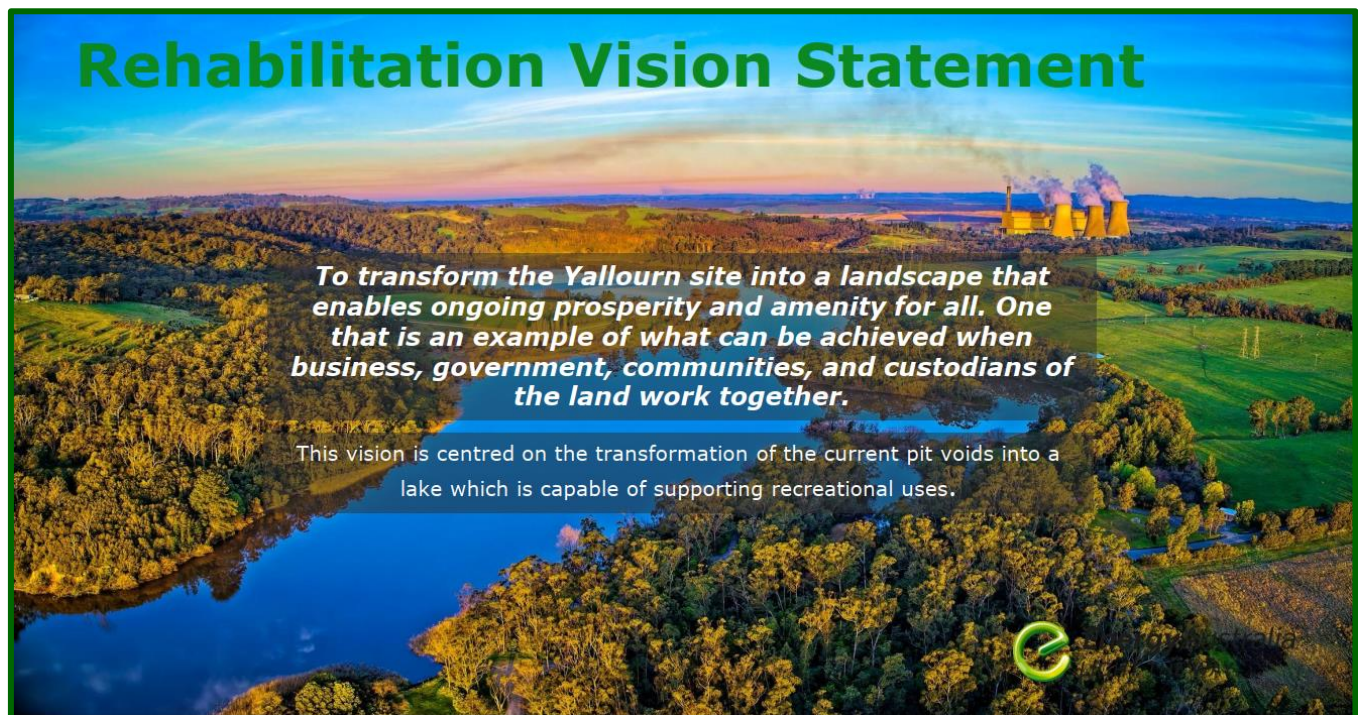
Yallourn Declared Mine Rehabilitation Plan (DMRP)

Webinar

July 2025




EnergyAustralia
LIGHT THE WAY



Rehabilitation Vision Statement

To transform the Yallourn site into a landscape that enables ongoing prosperity and amenity for all. One that is an example of what can be achieved when business, government, communities, and custodians of the land work together.

This vision is centred on the transformation of the current pit voids into a lake which is capable of supporting recreational uses.

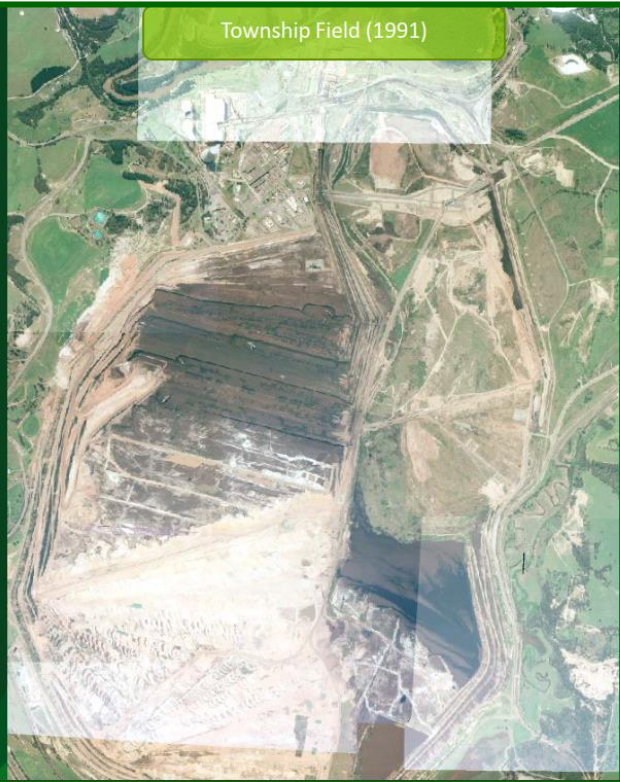




Before Township Field (1974)



Township Field (1991)



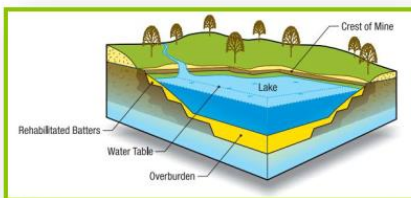
23

Why a pit lake?

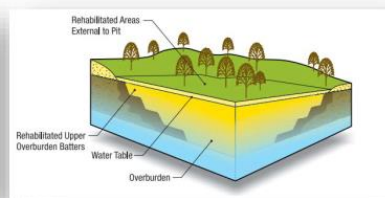
- A large disturbance area and history of events
- Stabilising the land
- Reducing fire risks
- Environmental restoration
- Recreational opportunities
- Passive control of risks

Rehabilitation options

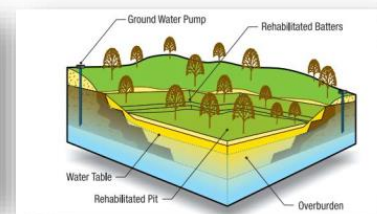
Pit lake



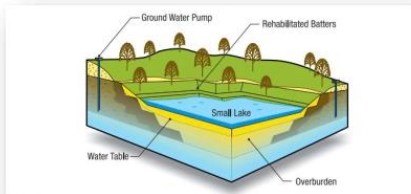
Full backfill



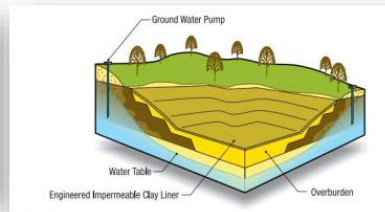
Partial backfill above the watertable



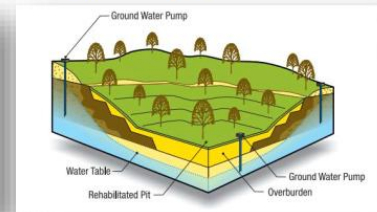
Partial backfill below the watertable



Lined void



Rehabilitated void



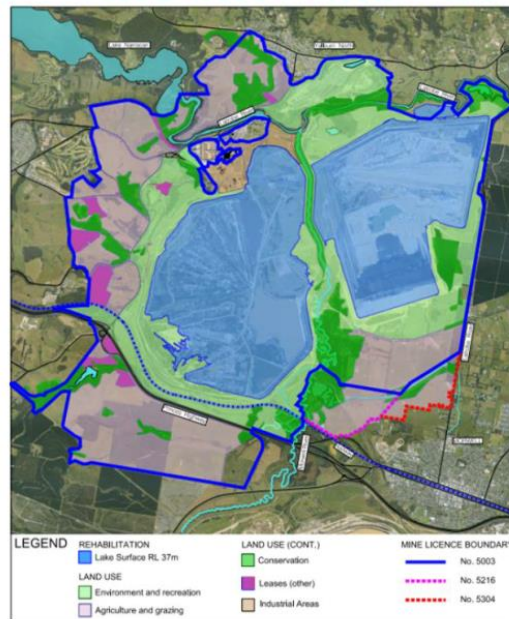
DMRP and Summary Document Structure

Chapter	Title	Chapter	Title
1	Purpose	10	Community and Stakeholder Engagement
2	Scope	11	Risk Assessment and Management
3	Project Overview and History	12	Activities and Design Considerations
4	Legal Obligations and Commitments	13	Closure Criteria
5	Environmental Setting	14	Implementation Plan and Milestones
6	Vision and Objectives	15	Monitoring and Maintenance
7	Progressive Rehabilitation	16	Post Closure Plan
8	Technical Studies	17	Knowledge Gaps
9	Landform and Land Use	18	Conclusion
		End	References and Appendices

48

We plan to transform the Yallourn Mine into a lake

- This requires 665 GL of water.
- Water access is proposed through a New Bulk Water Entitlement using water from the Latrobe system.
- Current entitlement allows 36.5GL per year
- Rehabilitation entitlements will have stricter conditions:
 - 27 GL per year
 - No access to water from December to May
 - No access to water when environmental flows are not met
- Conditions are consistent with the LVRRS 2023 amendment.
- A formal application under the Water Act is required.
- If approved, lake filling is expected to take 24 years.



Lakes are good for geotechnical stability

- Extensive geotechnical studies have been completed with findings shared in Chapter 8 and Appendix C
- Without geotechnical stability you can't safely reuse the land. Exclusion zones become a key part of the rehabilitation strategy.
- Lake water counteracts groundwater forces which can cause stability failures
- Lakes provide the best long-term stability with groundwater levels unable to materially change

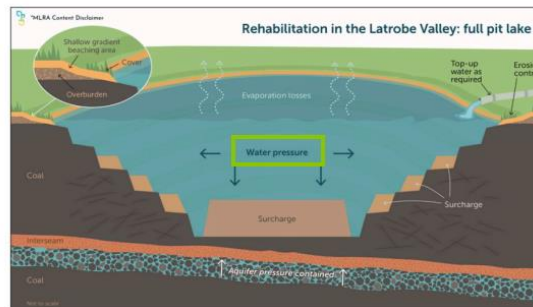
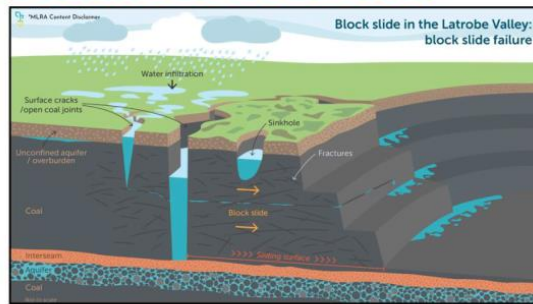


Image source: Mine Land Rehabilitation Authority (MLRA) Key Hazard Series Fact Sheet: Block Sliding and Rehabilitation concept series: Full Pit Lake. Fact sheets are available: <https://www.mineland.vic.gov.au/resource-library/fact-sheets>

DMRP Public Viewing Webpage



Our draft **Declared Mine Rehabilitation Plan (DMRP)** is now open for public submissions until **18 August, 2025**. A **summary** is also available.

We are working to deliver a final DMRP towards the end of 2025.

Plans for other parts of the site, including the power station, will be shared when they are developed.

Learn More and Have Your Say

Find **printed copies** of the draft DMRP at:

1. EnergyAustralia Community Hub, 228 Commercial Road, Morwell. Open Tuesdays and Wednesdays from 10am to 3pm
2. Local libraries in Moe, Morwell, Traralgon, Warragul, Mirboo North, Leongatha, Inverloch and Port of Sale. Please check opening hours.
3. Bairnsdale Corporate Centre, 273 Main Street, Bairnsdale.

To share your thoughts on the draft DMRP you can:

1. Email a submission to [EnergyAustralia Yallourn](mailto:EnergyAustralia.Yallourn).
2. Call us on 1800 574 947.
3. Direct mail to our postal address: EnergyAustralia Yallourn, PO Box 444, Moe VIC 3825.
4. Complete a [short survey](#) (we estimate it will take between 2 and 5 minutes to complete).
5. Or talk to us at one of the events listed to the right.

Or speak to us at one of the events below:

Date	Time	Event
Saturday, 21 June	8am to 12pm	Sale Producers Market
Wednesday, 25 June	11:30am to 5pm	The Mine Land Rehabilitation Authority 'Declared Mine Rehabilitation Plan and Key Legislation Information Session' Latrobe Valley GovHub, 65 Church St, Morwell
Saturday, 28 June	8am to 12pm	Traralgon Farmers Market
Sunday, 29 June	9am to 1pm	Stratford Market Day
Tuesday, 1 July	1pm to 2pm	Online webinar Register to attend
Saturday, 5 July	9am to 1pm	Trafalgar Farmers Market
Sunday, 6 July	10am to 2pm	Old Brown Coal Mine Museum, Yallourn North (Free Entry)
Thursday, 10 July	4pm to 5pm	Online webinar Register to attend

Summary

- Rehabilitation transforms active mine areas into future land uses that meet safe, stable, and sustainable criteria.
- A lake surrounded by recreation, conservation, and agriculture is the right plan for Yallourn.
- New industry and value-add opportunities may arise for which the perimeter land is suitable.
- The DMRP demonstrates why a pit lake is the right plan for Yallourn.
- The 60-day public consultation on the DMRP is live and finishes on 18 August.
- Public material includes a summary document, fact sheet, and technical studies.
- After consultation, EAY will update the DMRP and aim to submit it on September 30.

Have Your Say

To share your thoughts on the draft DMRP you can:

Email a submission to community.yallourn@energyaustralia.com.au

Call us on 1800 574 947.

Direct mail to our postal address: EnergyAustralia Yallourn, PO Box 444, Moe VIC 3825.

Complete a short survey, available on the Yallourn Transition website (we estimate it will take between 2 and 5 minutes to complete).

Or **talk to us** at an event or at the EnergyAustralia Community Hub

Online: <https://www.yallourntransition.com.au>

EAY Factsheet handout

A four-page booklet-sized factsheet was available to hand out at all in-person events and at the Morwell Community Hub. The booklet contained key messages, including justification for a pit-lake and the key features of the plan, detailed maps of the site before and after rehabilitation, and channels for feedback, including a QR code for the website and online survey.

EnergyAustralia Yallourn Declared Mine Rehabilitation Plan fact sheet

EnergyAustralia's Yallourn Power Station and Mine operate on the lands of the Brayakulmurrin people of the Cunatukurna nation. We acknowledge them as Traditional Owners and recognise their living culture and strong connections to their Country.

We are working to make the Yallourn site a place locals and visitors can enjoy and one that provides positive economic opportunities for the Latrobe Valley. Yallourn has helped power the lives of Australians for over 100 years. EnergyAustralia is committed to honouring this proud history as we work towards closing the power station and coal mine by mid-2025.

Why a lake?
Filling the mine voids with water to create a lake is the best local rehabilitation solution. Some of the reasons why include:

What is the Declared Mine Rehabilitation Plan?
The DMRP is our plan to make the mine site safe and sustainable by filling the mine voids with water with a view to creating a lake that local and visitors can enjoy and which can deliver a lake that was first proposed by the State Electricity Commission as the rehabilitation solution for the Yallourn mine in the early to mid-1990s. Since it's creation of further monitoring and investigation, industry experts and EnergyAustralia Yallourn have supported this approach.

The shall 10 high covers a wide range of localised subject areas, including geology, groundwater, surface water, climate, flora, water quality, flora, fauna, cultural heritage, seismic activity, environmental impact, community views, and stakeholder.

Plans for other parts of the site, including the power station, are still being developed.

Current Mine Layout

KEY:
 - MINING LICENCE BOUNDARY No. 5003
 - MINING LICENCE BOUNDARY No. 5216
 - MINING LICENCE BOUNDARY No. 5324
 - EXTENT OF YALLOURN MINE BATTERIES
 - MAJOR RIVER COURSE
 - MAJOR ROADS
 - MINOR ROADS
 - OFFSHORE RAILWAY LINE

SCALE 1: 50,000 ON A4 SHEET
 METRES

EnergyAustralia YALLOURN DECLARED MINE REHABILITATION PLAN
 LOCATION PLAN
 EASTERN ROAD, YALLOURN, VICTORIA 3807 T: 41 5722 2889 www.energyaustralia.com.au

DATE: MAY 2025
 DRAWN: P. MITCHELL
 CHECKED: N. KING

Proposed Rehabilitated Landuse Layout

KEY:
 - MINING LICENCE BOUNDARY No. 5003
 - MINING LICENCE BOUNDARY No. 5216
 - MINING LICENCE BOUNDARY No. 5324
 - EXTENT OF YALLOURN MINE BATTERIES
 - MAJOR RIVER COURSE
 - MAJOR ROADS
 - MINOR ROADS
 - OFFSHORE RAILWAY LINE

SCALE 1: 50,000 ON A4 SHEET
 METRES

EnergyAustralia YALLOURN DECLARED MINE REHABILITATION PLAN
 LOCATION PLAN
 EASTERN ROAD, YALLOURN, VICTORIA 3807 T: 41 5722 2889 www.energyaustralia.com.au

DATE: MAY 2025
 DRAWN: P. MITCHELL
 CHECKED: N. KING

Key features of the proposed DMRP

- Carefully filling the mine voids with water, to approximately reduced level (RL) 37m. This will require approximately 665 gigalitres (GL) of water in line with the recommendations of the Victorian Government's Latrobe Valley Regional Rehabilitation Strategy.
- Maintain the Morwell River Diversion (MRD) in its current location with some improvement works to support longer term stability.
- Reshaping the mine walls (batters) to create the final landform that has long-term safety and stability.
- Protection of existing conservation areas.
- Removal of surface water diversions that have been required during operations. This will restate natural flow directions of rainfall run-off allowing water to enter the pit and improving ground stability.
- Construction of spillways in the MRD to allow Morwell River and Latrobe River flood flows to enter the pit lakes during major flood events to protect the MRD from excessive water.
- Construction of a lake overflow in the northeast corner of the East Field to allow excess water during flooding to safely spill into the Latrobe River.

How to provide feedback
 The DMRP is on public display for 60 days from 18 June until 18 August 2025. During this time, community and stakeholders are encouraged to provide feedback.

Yallourn Mine: Have Your Say
 EnergyAustralia values community feedback. If you have any enquiry, would like to make a submission, raise a complaint, or need any further information on the Yallourn Declared Mine Rehabilitation Plan project, please contact us:

community.yallourn@energyaustralia.com.au
 1800 574 947
 PO Box 444, Moe, Victoria, 3825
 www.yallourntransition.com.au

Figure 17: DMRP Fact sheet

Technical fact sheets from the Mine Land Rehabilitation Authority¹

Detailed technical fact sheets prepared by the MLRA were available at all events covering the topics of:

- [Block slide key hazards](#)
- [Dry void rehabilitation concepts](#)
- [Fire key hazards](#)
- [Floor heave key hazards](#)
- [Full pit-lake rehabilitation concepts](#)
- [Interconnected pit-lake rehabilitation concepts](#)



Figure 18: MLRA Technical fact sheets made available at events

¹ <https://www.mineland.vic.gov.au/>

A1 Display Boards

Key messages, current and future maps of the site showing the outline of the proposed pit-lakes and a timeline.



Our vision: "To transform the Yallourn site into a landscape that enables ongoing prosperity and amenity for all. One that is an example of what can be achieved when business, government, communities, and custodians of the land work together."

Transforming Yallourn



EnergyAustralia
LIGHT THE WAY

Fact Sheet Draft DMRP

What is the Declared Mine Rehabilitation Plan (DMRP)?

The DMRP is our plan to make the Yallourn mine site safe, stable and sustainable by filling the mine voids with water with a view to creating a lake that locals and visitors can enjoy and wildlife can call home. A lake was first proposed in the early to mid-1990s. Since then, decades of further modelling and investigations by industry experts and EnergyAustralia Yallourn have supported this approach.

Plans for other parts of the site, including the power station, are still being developed.



Why a lake?



Stabilising the land:
Water would add weight to the floor and walls of the mine, which counteracts the forces that cause ground movement.



Reducing fire risks:
Exposed coal might increase the risk of fire. A lake creates a natural barrier to help limit the spread of fire from one area to another.



Recreational opportunities:
EnergyAustralia's aspiration is for the pit lake to offer activities such as fishing, boating, and swimming. This would enhance the quality of life for residents and attract tourists, boosting the local economy.



Environmental Restoration:
Transforming the site into a pit lake can help restore the local ecosystem by providing a habitat for aquatic life, attracting various species of birds and other wildlife, contributing to biodiversity, and enhancing existing rehabilitation efforts at Yallourn.

Key features of the proposed DMRP

- Carefully filling the mine voids with approximately 665 gigalitres (GL) of water to approximately reduced level (RL) 57m.
- Improvement works to the existing Morwell River Diversion (MRD), supporting longer-term stability.
- Reshaping the mine walls (batters) to create the final landform that has long-term safety and stability.
- Protecting existing conservation areas.
- Removing surface water diversions required during operations, thereby reinstating natural flow directions of rainfall run-off and improving ground stability.
- Constructing spillways in the MRD to allow Morwell River and Latrobe River flood flows to enter the pit lakes during major flood events, protecting the MRD from excessive water.
- Constructing a lake overflow in the northeast corner of the East Field, allowing excess flood waters to spill into the Latrobe River safely.



Have Your Say
Scan the QR code to find out more

Declared Mine Rehabilitation Plan



EnergyAustralia
LIGHT THE WAY

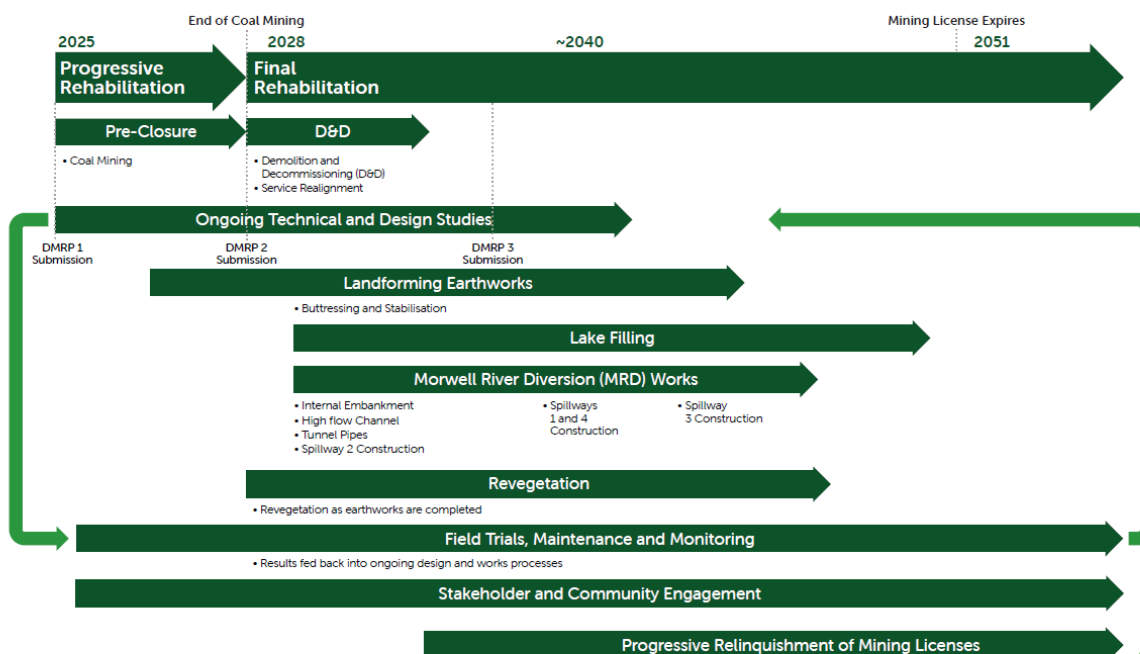
In considering the best way to rehabilitate the site, we have listened to industry experts and used our own knowledge to develop solutions that are safe and can create positive outcomes for the community and the environment in the long run.

Declared Mine Rehabilitation Plan



EnergyAustralia
LIGHT THE WAY

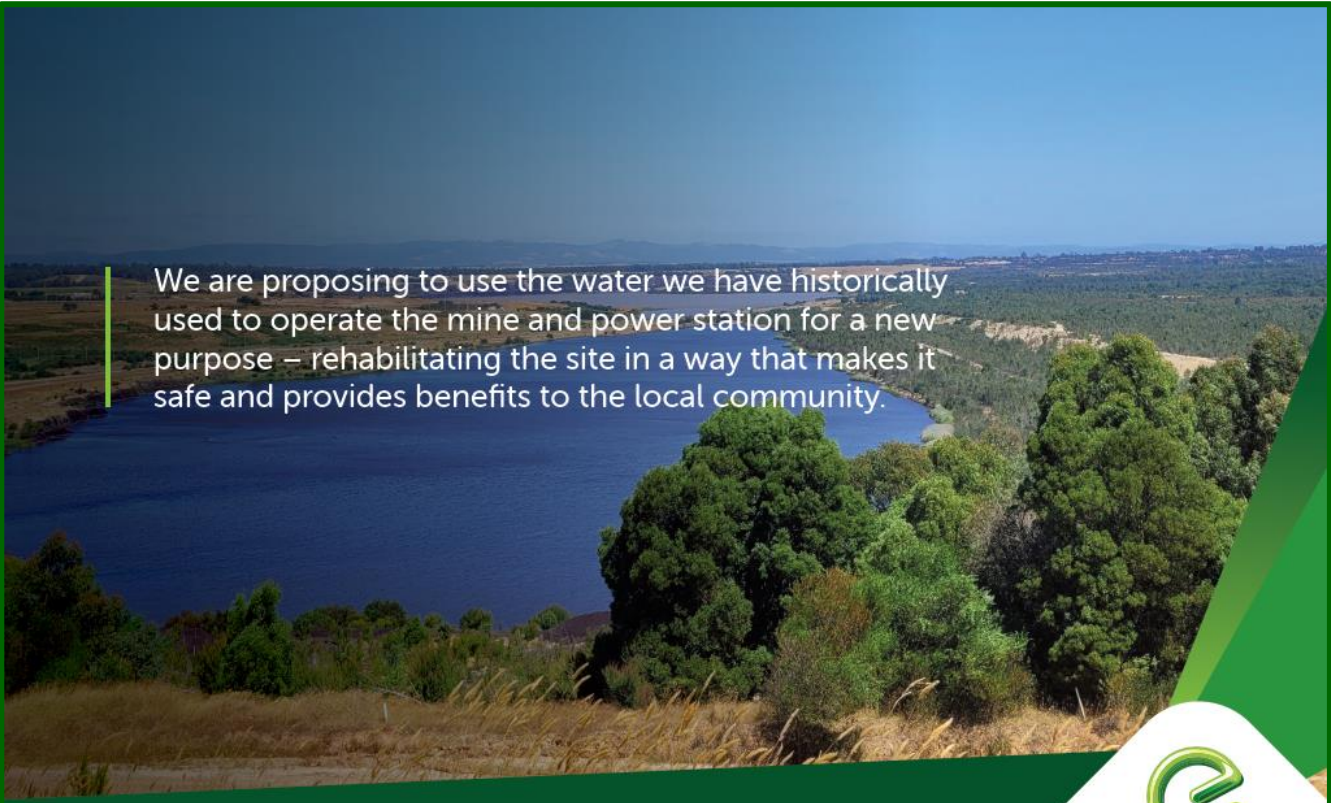
Mine Rehabilitation Timeline



EnergyAustralia
LIGHT THE WAY








We are proposing to use the water we have historically used to operate the mine and power station for a new purpose – rehabilitating the site in a way that makes it safe and provides benefits to the local community.

Declared Mine Rehabilitation Plan



EnergyAustralia
LIGHT THE WAY




Rehabilitating the mine into a lake will not only stabilise the land and reduce fire risk but also enable potential new economic and recreational opportunities.

Declared Mine Rehabilitation Plan



EnergyAustralia
LIGHT THE WAY



In considering the best way to rehabilitate the site, we have listened to industry experts and used our own knowledge to develop solutions that are safe and can create positive outcomes for the community and the environment in the long run.

Declared Mine Rehabilitation Plan



EnergyAustralia
LIGHT THE WAY



A lake will complement the already established conservation areas, wetlands and river floodplains for birds and other wildlife to flourish.

Declared Mine Rehabilitation Plan

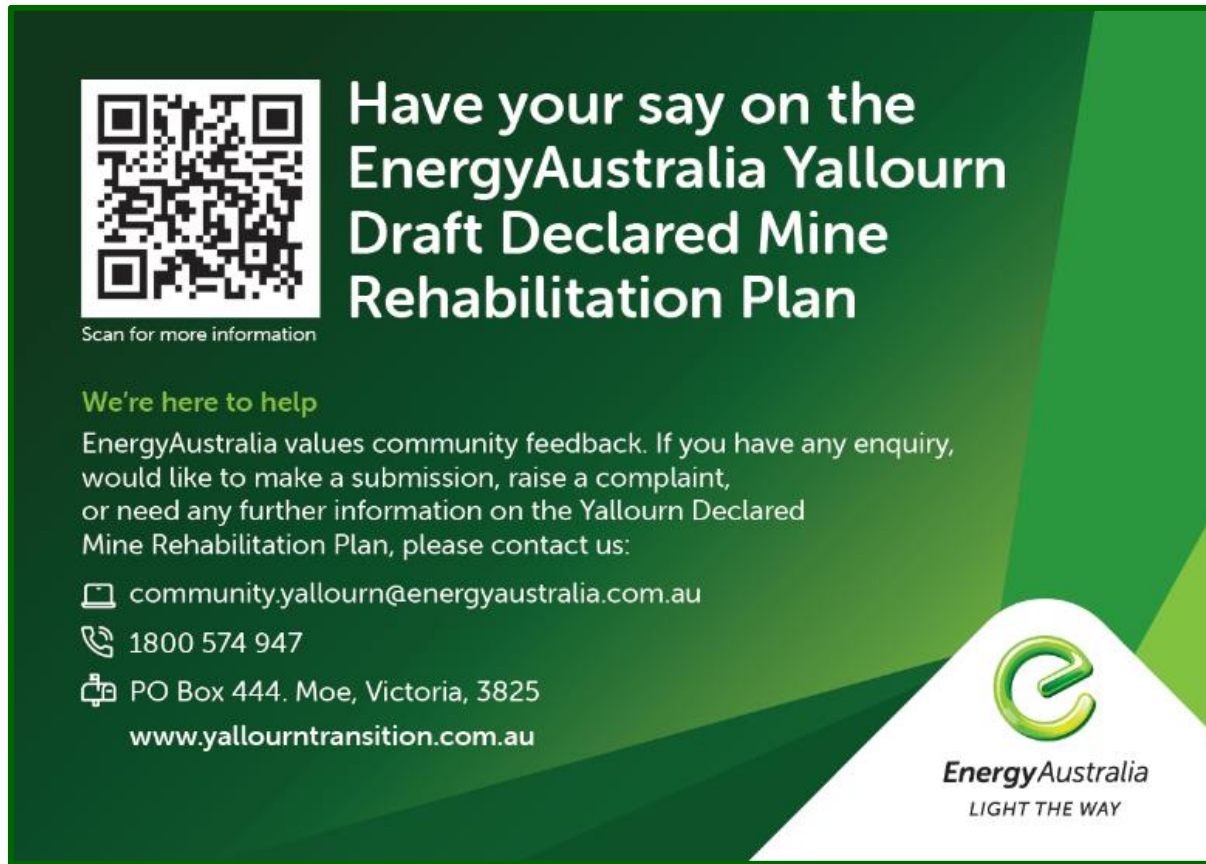



EnergyAustralia
LIGHT THE WAY

Figure 19: 10 x A1 corflute boards on display at events and at the EAY Community Hub in Morwell

'Have your say' postcard




An A5 postcard-size handout with the QR code to the survey and contact details.





Scan for more information

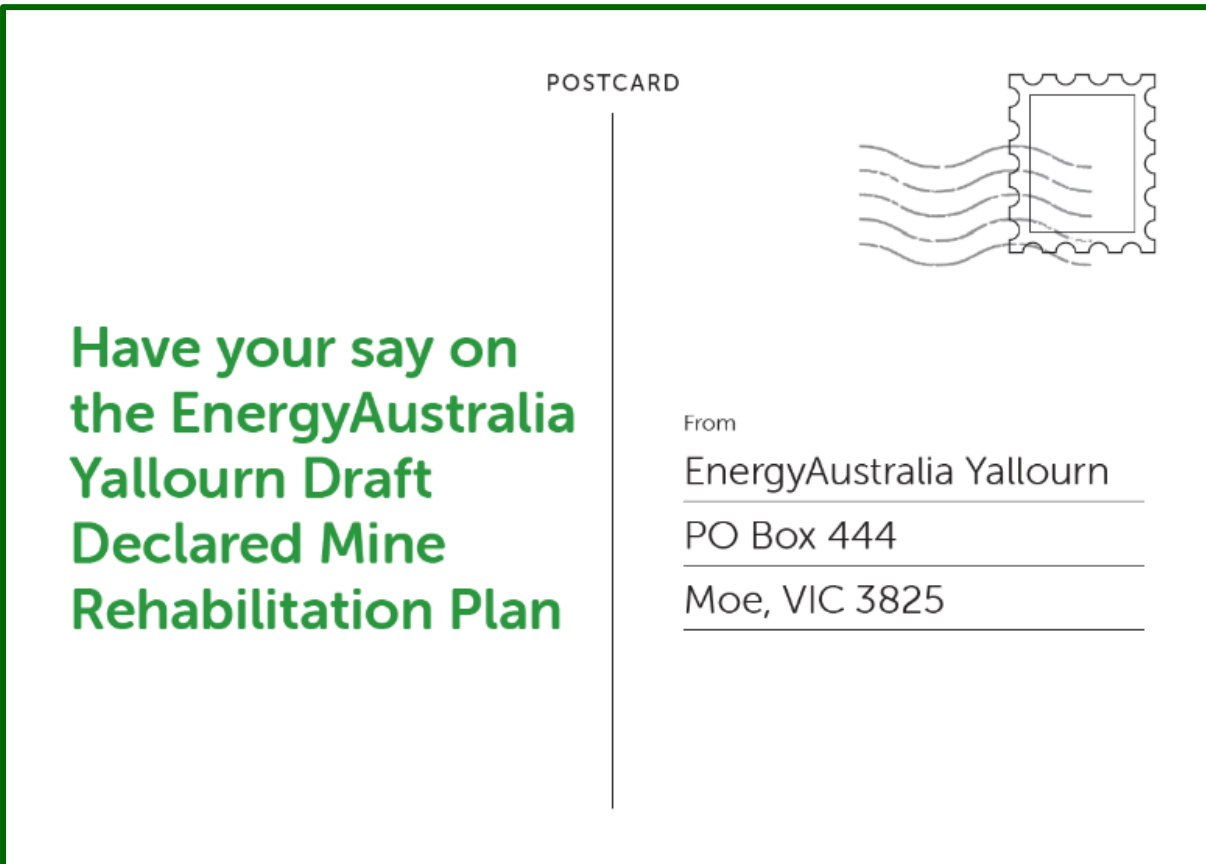
Have your say on the EnergyAustralia Yallourn Draft Declared Mine Rehabilitation Plan

We're here to help
EnergyAustralia values community feedback. If you have any enquiry, would like to make a submission, raise a complaint, or need any further information on the Yallourn Declared Mine Rehabilitation Plan, please contact us:

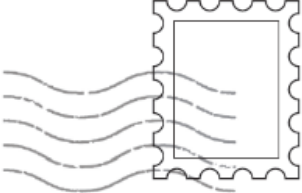
 community.yallourn@energyaustralia.com.au
 1800 574 947
 PO Box 444, Moe, Victoria, 3825
www.yallourntransition.com.au



EnergyAustralia
LIGHT THE WAY



POSTCARD



Have your say on
the EnergyAustralia
Yallourn Draft
Declared Mine
Rehabilitation Plan

From
EnergyAustralia Yallourn
PO Box 444
Moe, VIC 3825

Giveaways



Figure 20: Giveaways: Water bottles, travel mugs, jellybeans and tote bags to carry the printed materials and giveaways

What we heard

To summarise the engagement period, EAY developed a two-page "What We Heard" Report, to be made available on the Project website. The summary is provided at **Appendix C: Yallourn DMRP What We Heard Report**.

Yallourn Draft Declared Mine Rehabilitation Plan (DMRP) What We Heard

EnergyAustralia's Yallourn power station and mine operate on the lands of the Brayakaulung people of the Gunaikurnai nation. We acknowledge them as Traditional Owners and recognise their living culture and strong connections to their Country.

Yallourn has powered Victoria for over a century. As we prepare for the closure of the power station and mine in mid-2028, EnergyAustralia is committed to ensuring the site is rehabilitated in a way that is safe, stable, and sustainable. The Draft Declared Mine Rehabilitation Plan proposes to transform the former mine voids into an interconnected lake and is supported by technical studies including geology, ground water, climate, floods, water quality, flora, fauna, cultural heritage, seismic activity, environmental impact, community views, and stability risks.

Formal community and stakeholder engagement and consultation for the Draft Declared Mine Rehabilitation Plan was undertaken over a 60-day period from **18 June to 18 August 2025**.

Participation
During our 60-day consultation period, community members and stakeholders participated in a series of events and activities, as detailed below:

Activity	What	Participation
6x Community Events	Farmers Markets at Sale, Stratford, Traralgon, Traralgon, Yallourn North (Old Brown Coal Mine Museum), MLBA	137
2x Webinars	Online presentation with GBA	29
Website Visits	Visits to yallourntransition.com.au	2.9k website views and 2.1k unique visitors
Social Media	Visits and interactions on Facebook	Reach 13.7k, engagement 77, link clicks 94
Survey	Online and paper-based survey	38
Submissions	Formal Submission	22

What We Heard
Feedback from the community and stakeholders has been grouped into several themes and summarised below:

Energy security
We want to understand how Victoria will be powered post Yallourn.

Water
We care about water use, how water is sourced to create a lake, and what the lake water quality will be.

Morwell River Diversion
We want to understand more about the MRD and the Morwell River.

Land use and future access
We would like there to be commercial and tourism opportunities.

Ongoing community and stakeholder involvement
We want to continue to be involved in opportunities to shape and design the future of the site. We want to form traditional owner partnerships.

Environment
We want to know more about how the lake will impact or benefit biodiversity and the surrounding environment.

Stability
We want to understand how stable the land will be during and after lake filling.

Social impact
We are interested in jobs, recreation and community benefits.

LIGHT THE WAY

Concept image of Lake Yallourn

How we will use your feedback
Our aim is to help make the final Declared Mine Rehabilitation Plan reflect the values and aspirations of the Gippsland community. We will use your feedback to help shape the final rehabilitation approach to prepare the final Declared Mine Rehabilitation Plan. We will submit a Consultation Engagement Summary Report that links community and stakeholder feedback to changes and amendments that will show how your feedback has helped to contribute to the final DMRP. The report and all formal submissions will accompany the final DMRP.

Next Steps for the DMRP Submission

- Review and Incorporate Feedback**
All feedback received during the public consultation period (which closed on Monday, 18 August 2025) has been reviewed and considered. Relevant insights have been incorporated into the final version of the DMRP.
- Finalising the DMRP**
The DMRP will be updated and refined based on community and stakeholder input, technical assessments, and regulatory requirements.
- Submission to Resources Victoria**
The final DMRP must be submitted to Resources Victoria – Regulatory Operations (RRO) by October 2025, unless an extension is formally granted.
- Ongoing Engagement**
Although the formal consultation period has ended, we encourage the community to remain engaged. Questions about the rehabilitation process or other matters can still be directed to the contacts provided below.

Contact Us:
Visit us in person at our Community Hub – 228 Commercial Rd, Morwell. Open Tuesdays & Wednesdays, 10am–5pm, or by appointment.
communityyallourn@energyaustralia.com.au
1800 574 947
PO Box 444, Moe, Victoria, 3825
www.yallourntransition.com.au

Yallourn Draft Declared Mine Rehabilitation Plan (DMRP)
Information current as at September 2025.

LIGHT THE WAY

Yallourn Draft Declared Mine Rehabilitation Plan (DMRP) What We Heard

EnergyAustralia’s Yallourn power station and mine operate on the lands of the Brayakaulung people of the Gunaikurnai nation. We acknowledge them as Traditional Owners and recognise their living culture and strong connections to their Country.

Yallourn has powered Victoria for over a century. As we prepare for the closure of the power station and mine in mid-2028, EnergyAustralia is committed to ensuring the site is rehabilitated in a way that is safe, stable, and sustainable.

The Draft Declared Mine Rehabilitation Plan proposes to transform the former mine voids into an interconnected lake and is supported by technical studies including geology, ground water, climate, floods, water quality, flora, fauna, cultural heritage, seismic activity, environmental impact, community views, and stability risks.

Formal community and stakeholder engagement and consultation for the Draft Declared Mine Rehabilitation Plan was undertaken over a 60-day period from **18 June to 18 August 2025**.

Participation

During our 60-day consultation period, community members and stakeholders participated in a series of events and activities, as detailed below:

Activity	What	Participation
6x Community Events	Farmers Markets at Sale, Stratford, Traralgon, Traralgar, Yallourn North (Old Brown Coal Mine Museum), MLRA	137
2x Webinars	Online presentation with Q&A	29
Website Visits	Visits to yallourn.transition.com.au	2.9k website views and 2.1k unique visitors
Social Media	Visits and interactions on Facebook	Reach 13.7k, engagement 77, link clicks 94
Survey	Online and paper-based survey	38
Submissions	Formal Submission	22

What We Heard

Feedback from the community and stakeholders has been grouped into several themes and summarised below:

Energy security

We want to understand how Victoria will be powered post Yallourn.

Water

We care about water use, how water is sourced to create a lake, and what the lake water quality will be.

Morwell River Diversion

We want to understand more about the MRD and the Morwell River.

Land use and future access

We would like there to be commercial and tourism opportunities.

Ongoing community and stakeholder involvement

We want to continue to be involved in opportunities to shape and design the future of the site. We want to form traditional owner partnerships.

Environment

We want to know more about how the lake will impact or benefit biodiversity and the surrounding environment.

Stability

We want to understand how stable the land will be during and after lake filling.

Social impact

We are interested in jobs, recreation and community benefits.

Concept image of Lake Yallourn



How we will use your feedback

Our aim is to help make the final Declared Mine Rehabilitation Plan reflect the values and aspirations of the Gippsland community.

We will use your feedback to help shape the final rehabilitation approach to prepare the final Declared Mine Rehabilitation Plan. We will submit a Consultation Engagement Summary Report that links community and stakeholder feedback to changes and amendments that will show how your feedback has helped to contribute to the final DMRP. This report and all formal submissions will accompany the final DMRP.

Next Steps for the DMRP Submission

1. Review and Incorporate Feedback

All feedback received during the public consultation period (which closed on **Monday, 18 August 2025**) has been reviewed and considered. Relevant insights have been incorporated into the final version of the DMRP.

2. Finalising the DMRP

The DMRP will be updated and refined based on community and stakeholder input, technical assessments, and regulatory requirements.

3. Submission to Resources Victoria


The final DMRP must be submitted to **Resources Victoria – Regulatory Operations (RVRO)** by October 2025, unless an extension is formally granted.

4. Ongoing Engagement


Although the formal consultation period has ended, we encourage the community to remain engaged. Questions about the rehabilitation process or other matters can still be directed to the contacts provided below.

Contact Us:

Visit us in person at our Community Hub – 228 Commercial Rd, Morwell.
Open Tuesdays & Wednesdays, 10am–3pm, or by appointment.

 community.yallourn@energyaustralia.com.au

 1800 574 947

 PO Box 444, Moe, Victoria, 3825

www.yallourntransition.com.au

Appendix D: Consultation Report: Mine Rehabilitation – The Future Together

Reference:

<https://www.mineland.vic.gov.au/wp-content/uploads/2025/07/Consultation-Report-Mine-Rehabilitation-The-Future-Together-.pdf>



Consultation report: Mine Rehabilitation: The Future Together

On 25 June 2025, the Mine Land Rehabilitation Authority (MLRA) hosted a community open house event titled *Mine Rehabilitation: The Future Together*. Held at the Latrobe Valley GovHub in Morwell, the event brought together community members, industry representatives, researchers, and government stakeholders. Attendees had the opportunity to speak directly with mine licensees about closure planning and the development of Declared Mine Rehabilitation Plans (DMRPs.) In addition, they gained insights into the regulatory processes involved and connected with both government representatives and researchers. The event also provided material on the *Collaborative Planning for Post-Mining Development in the Latrobe Valley* project, along with guidance on what's coming next, how to get involved in each process, and where to find further information.

What We Did

The MLRA established an open house format, allowing attendees to explore various information stations at their own pace. Exhibitors included Energy Australia Yallourn, ENGIE Hazelwood, AGL Loy Yang, Federation University Australia, Resources Victoria, and the MLRA.

Exhibitors were available throughout the day to answer questions and listen to community feedback. The event ran from 11:30am to 5:00pm and was attended by a broad cross-section of the community. Visitors were provided with a broad range of information and materials. To ensure accessibility, key materials were also made available online, and feedback opportunities were provided both in person and via follow-up channels.

What We Heard

As part of the event, visitors were invited to take part in an interactive *Insights Wall* activity. Visitors were encouraged to write down a word, question, or short comment reflecting something they learned, felt, or were curious about during their visit.

This feedback helped us understand the topics and themes that resonated most strongly with community members.

OFFICIAL

Water

One of the most recurring themes was water, its availability, use, management, and restoration. Several notes reflected a desire for clearer information about water use in mine rehabilitation, including concerns about groundwater, the Morwell River Diversion, and calls for better pricing mechanisms to support river restoration. Attendees expressed an interest in more transparent communication about water risks, especially in relation to declared mines and the broader Latrobe River system.

Timeframes and processes

There was also strong interest in gaining a better understanding of timeframes and regulatory processes, with some visitors questioning the robustness of current regulation and the level of coordination between government and industry.

Future use and repurposing

Another key area of reflection was the future use and repurposing of mine land. Attendees noted the importance of diversity in repurposing, including both industry and recreation, and expressed a desire to see plans that deliver lasting value for the region.



Attendees at the Mine Rehabilitation The Future Together event in discussion

Engagement

Community engagement itself emerged as a topic of discussion. Some visitors asked whether there is enough inclusion of communities beyond the Latrobe Valley. Others called for ongoing dialogue and deep listening, with several people specifically asking for the event to be held again in future.

Together, this feedback highlights a community that is curious, thoughtful, and invested in the long-term outcomes of mine rehabilitation. It underscores the importance of continuing to create open, accessible opportunities for the public to ask questions, build understanding, and help shape what happens next.

OFFICIAL



What We Will Do Next

Feedback gathered during the event, including from the Insights Wall and direct conversations, will inform the MLRA's ongoing community engagement and planning activities. We will:

- Share key themes on our website, in future updates, and with participating stakeholders
- Use the feedback to refine our materials and messaging, particularly around technical content
- Continue working with industry and government to keep community voices central to planning
- Continue to educate and inform the community in relation to mine rehabilitation

We thank all who attended and contributed to the conversation.

Want to know more?

If you have any questions or comments, you can contact us by calling 1800 571 966, emailing contactus@mineland.vic.gov.au, following us on social media, or subscribing to our mailing list at www.mineland.vic.gov.au.

OFFICIAL



Appendix E: Next steps and contact information for further inquiries

Next Steps for the DMRP Submission

1. **Review and Incorporate Feedback**

All feedback received during the public consultation period (which closed on **Monday, 18 August 2025**) has been reviewed and considered. Relevant insights have (as appropriate) been incorporated into an updated version of the DMRP.

2. **Finalising the DMRP**

The DMRP has been updated and refined based on community and stakeholder input, technical assessments, and regulatory requirements.

3. **Submission to Resources Victoria**

The final DMRP must be submitted to **Resources Victoria - Regulatory Operations (RVRO)** by **30 September 2025**, unless an extension is formally granted.

4. **Ongoing Engagement**

Although the formal consultation period has ended, the community is encouraged to stay engaged. Questions or concerns about the rehabilitation process or other matters can still be directed to the contacts provided below.

Contact Us:

- Visit us in person at our Community Hub – 228 Commercial Rd, Morwell
- Open Tuesdays & Wednesdays, 10 am–3 pm, or by appointment.
- Contact us with questions:
- community.yallourn@energyaustralia.com.au
- 1800 574 947
- PO Box 444, Moe VIC 3825

